

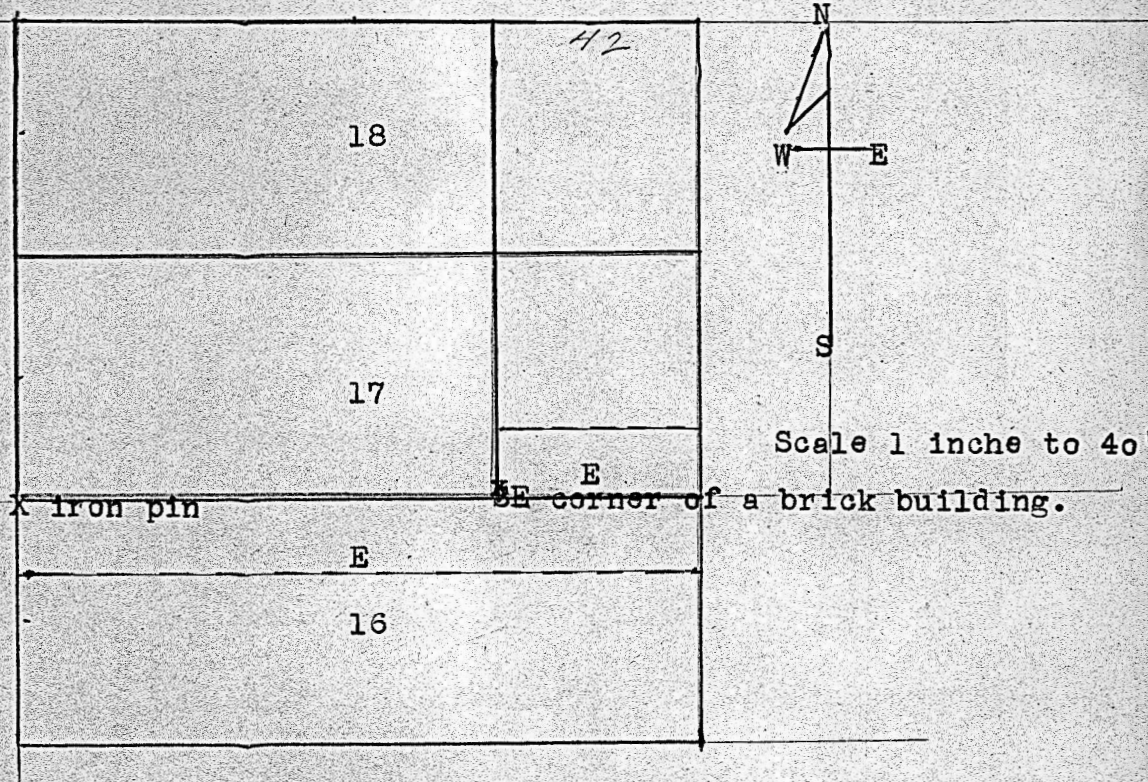
H. A. ROWLAND • Kansas Licensed Civil Engineer

Member

National Society Professional Engineers
 Kansas Society Professional Engineers
 Kansas Engineering Society

PHONE 796 X

McPHERSON, KANSAS



STATE OF KANSAS, McPherson County, ss.,

THIS IS TO CERTIFY, That the above tract described as the west 100 feet of lots 17 and 18 in Block 66 of the Original Town of McPherson, Kansas, and that I have marked the same as shown above.

Dated at McPherson, Kansas, Jan. 25th 1951.

Signed: - H. A. Rowland
 Registered Professional Engineer.

P.S., The two tracts marked E are plots of ground as shown where an easement the owners of said west 100 feet hold on these tracts for certain specified privileges.



MICROFILM