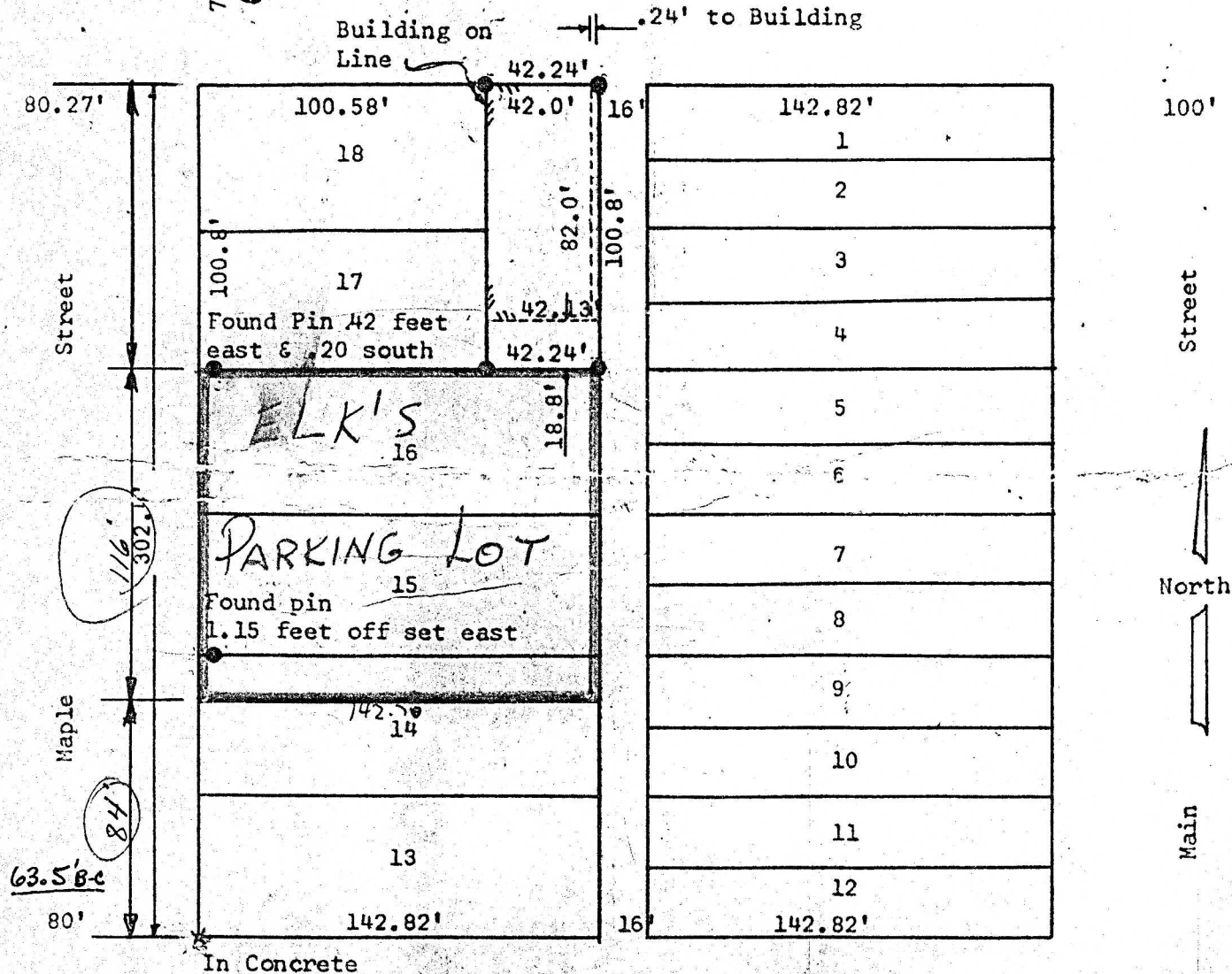


18.3' ~~Marlin~~ 78.62' 301.65' Street 80'



State of Kansas)
County of McPherson) SS


Survey called for by Bill Lehmborg

Signed this 20 day of November, 1963

and that the
vey as far as

F.R.R.

Francis R. Rankin
County Engineer
McPherson County, Kansas



A circular professional engineer seal for Francis R. Rankin. The outer ring contains the text "F. R. RANKIN" at the top and "PROFESSIONAL ENGINEER" at the bottom. The inner circle contains the word "LICENSED" at the top, the number "799" in the center, and "STATE OF KANSAS" at the bottom. The seal is stamped over the typed name and title of the engineer.