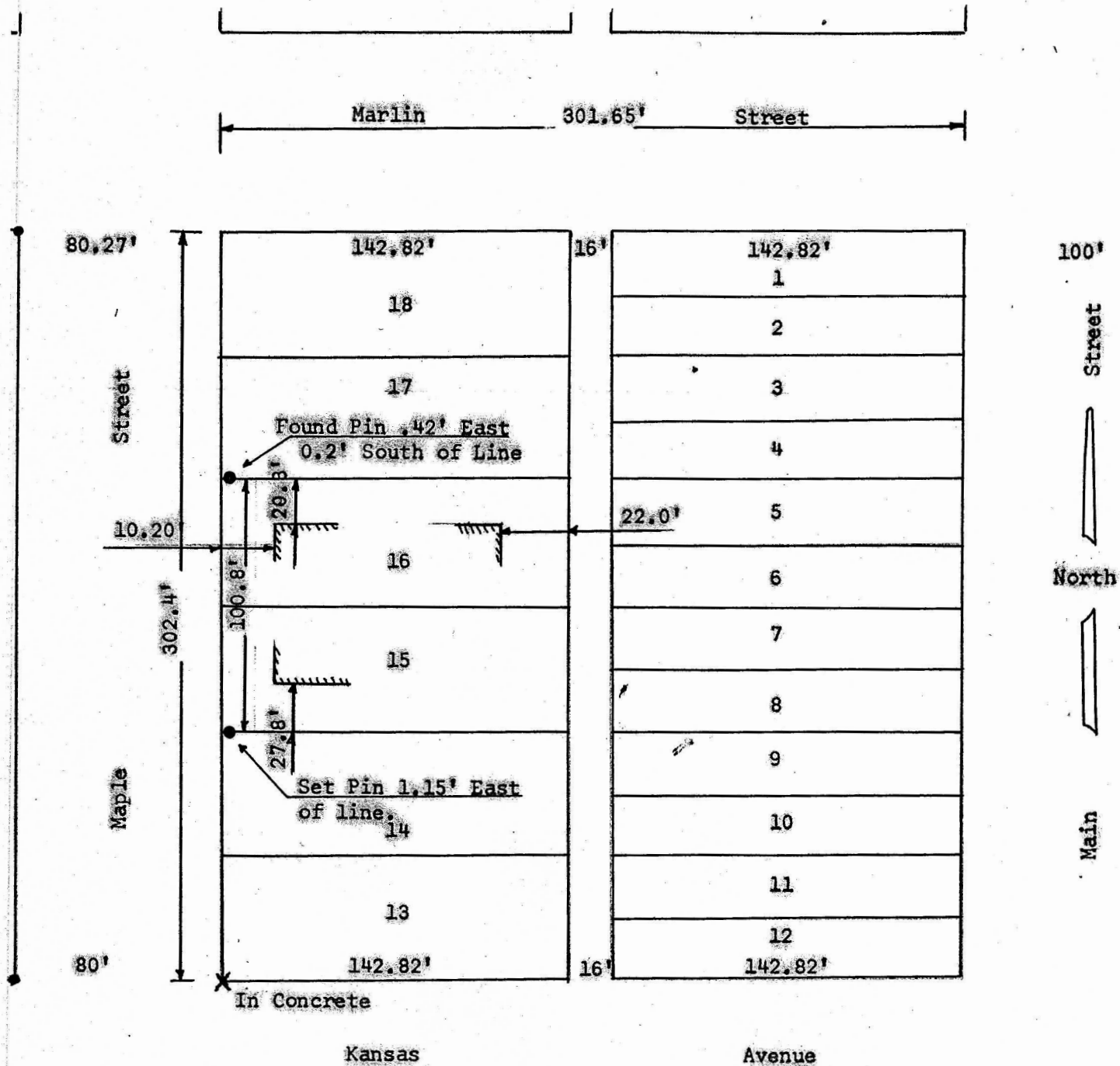


A SURVEY OF LOTS 15 & 16 BLOCK 66
ORIGINAL TOWN, MCPHERSON, KANSAS



State of Kansas)
County of McPherson) SS

I, Francis R. Rankin, County Engineer of McPherson County, Kansas, do hereby certify that under my supervision a second survey was conducted in Block 66 of the Original Town to the