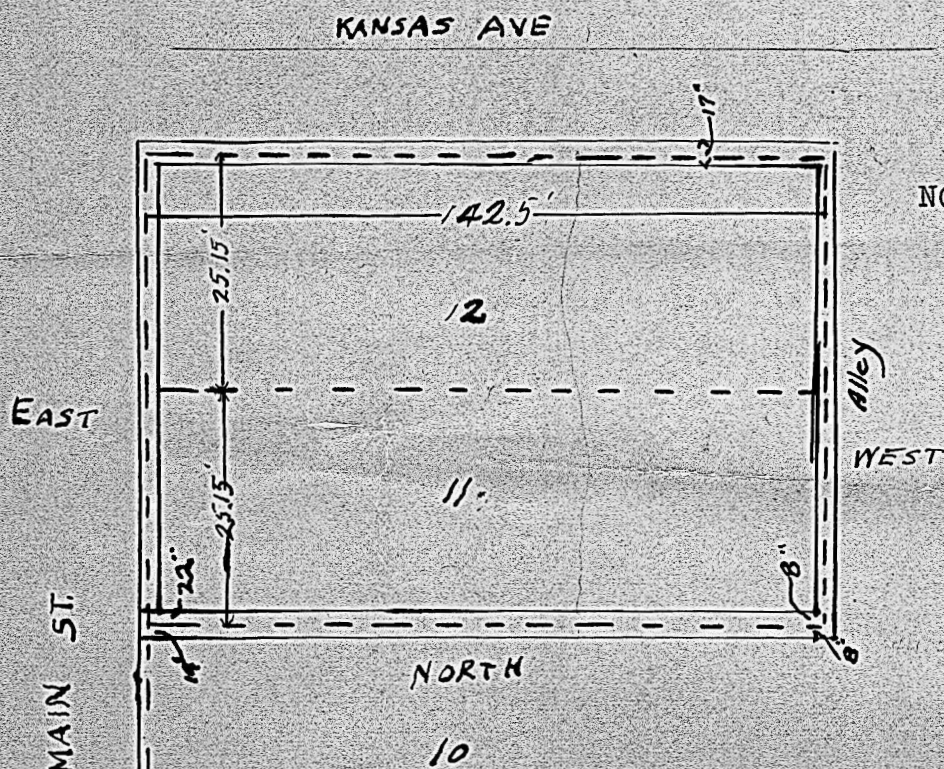


PLAT OF LOTS 11 & 12 IN BLOCK 66 of THE ORIGINAL TOWN OF  
McPHERSON, MCPHERSON COUNTY, KANSAS.



NOT DRAWN TO SCALE.

STATE OF KANSAS, MCPHERSON COUNTY, ) ss:

This is to certify, that, I, H. A. Rowland, a land surveyor, residing at McPherson, Kansas, did prepare the above sketch of lots 11 and 12 in Block 66 of the Original Town of McPherson, Kansas, from a survey made by me the 23rd day of Sep., 1940. The north line of lot eleven is at the center of a brick wall running east from the northwest corner of said lot 11, and at the east end it is 14 inches south of the north side of said wall. Surveyed Sep. 23, 1940.

Dated at McPherson, Kansas, this 24th day of Sep. 1940.

*H. A. Rowland*

H. A. Rowland, Surveyor.

MICROFILM