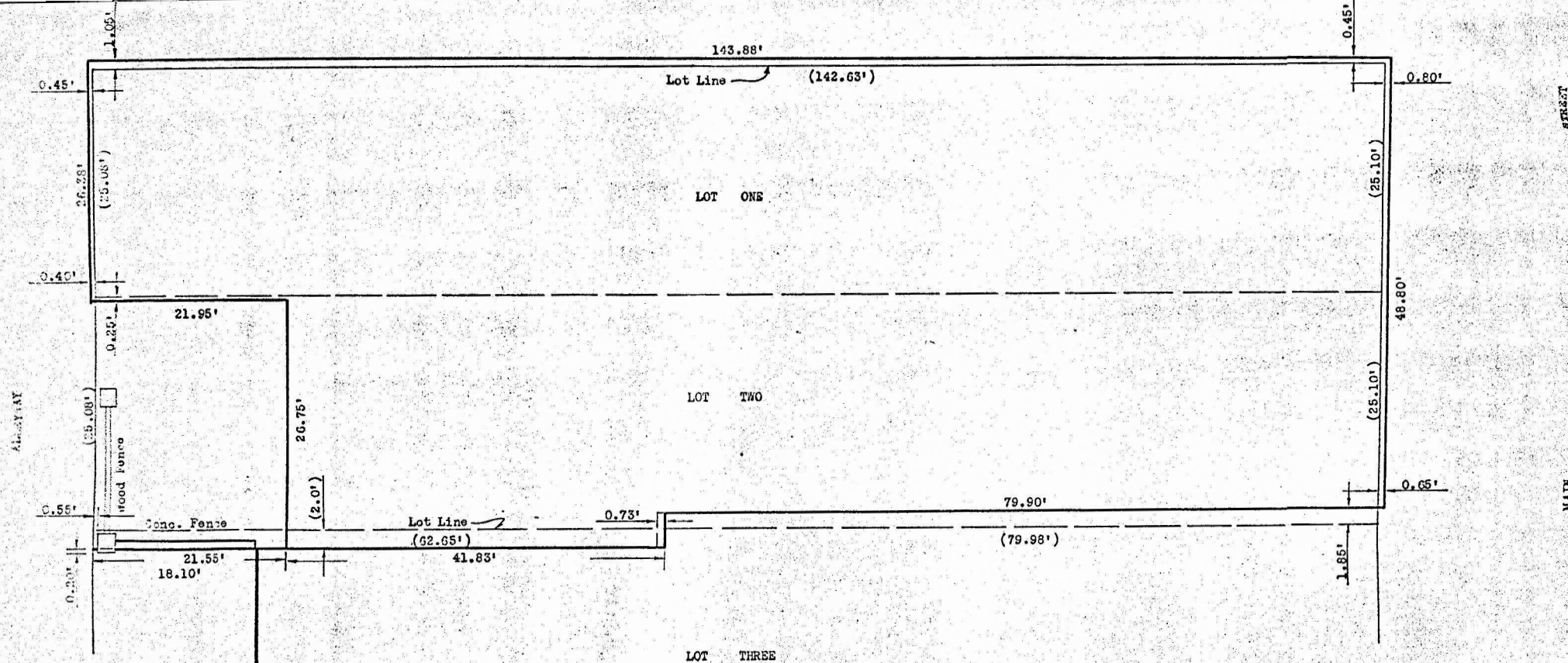


MICROFILM



State of Kansas )  
 County of McPherson ) SS

I, Melvin Ferguson, County Engineer of McPherson Co., Kansas, do hereby certify that under my supervision a Survey was made to determine the location of the Home State Bank & Trust Building located on Lots 1, 2 and the North 2 feet of the West 62.65 feet of Lot 3, Block 55 in the Original Town to the City of McPherson, Kansas, and the above plat is a true exhibit of said Survey as far as it is known to me.

Survey called for by Myron Garrelts (Home State Bank)

Signed on this 17<sup>th</sup> day of August 1975.

*Melvin Ferguson*  
 Melvin Ferguson  
 County Engineer  
 McPherson County, Kansas



HOME STATE BANK & TRUST	
SCALE 1" = 10'	REVISIONS
DATE 8-14-75	
DRN R.K. CKD	BIN 478
APP'D	