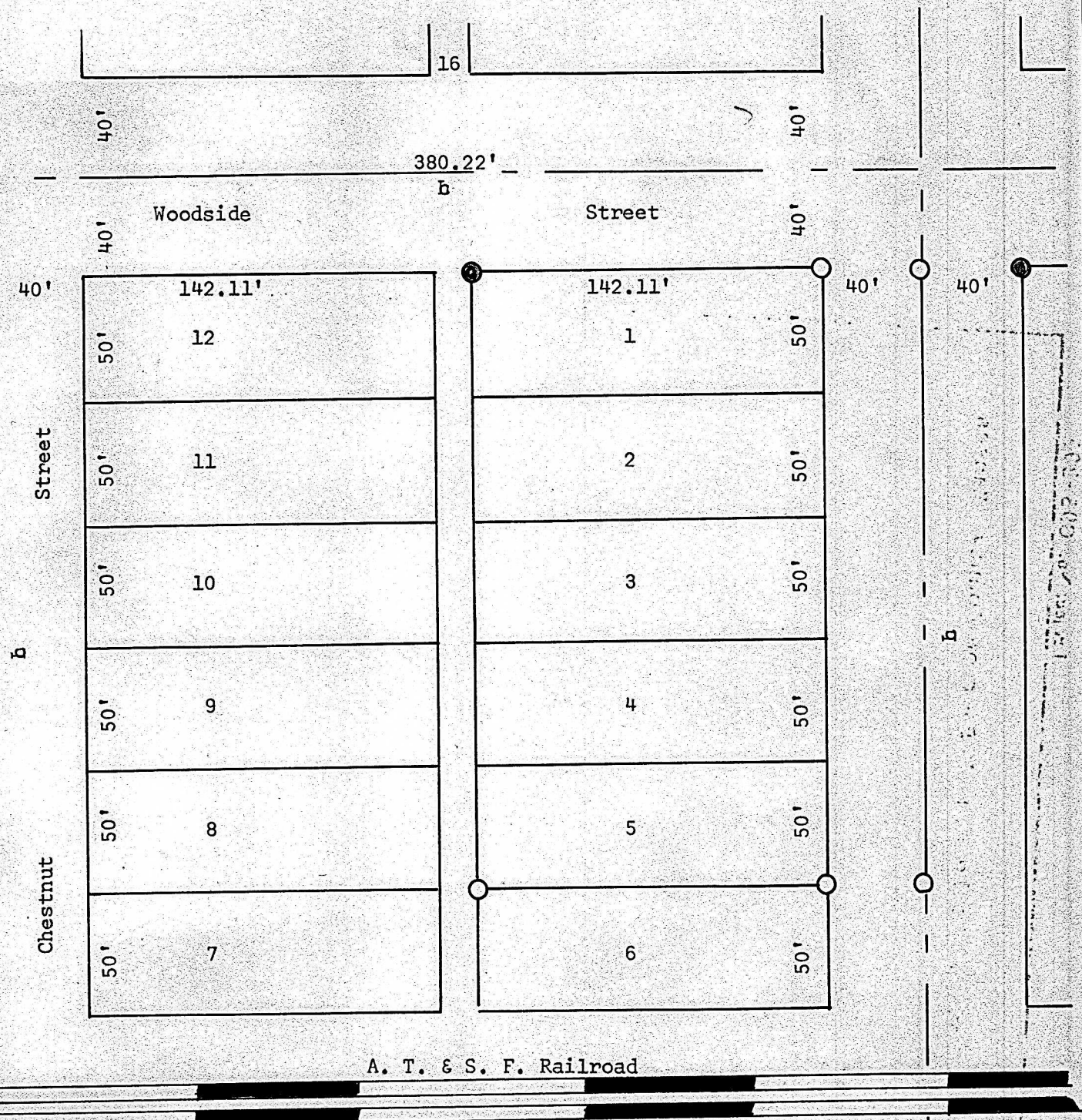


A SURVEY OF LOTS 1 Thru 5, BLOCK 33
ORIGINAL TOWN, MC PHERSON, KANSAS



- 16'
- Pins Found this Survey
 - Pins Set this Survey

State of Kansas)
County of Mc Pherson) SS

I, F. R. Rankin, County Engineer of McPherson County, Kansas, do hereby certify that under my supervision a survey was made of Lots 1 through 5, Block 33, Original Town to the City of McPherson, Kansas and that the accompanying plat is a true exhibit of said survey, as far as it is known to me.

Surveyed called for by Burke Construction

Signed this 20 day of October, 1967

F. R. Rankin
F. R. Rankin
County Engineer
McPherson County, Kansas

