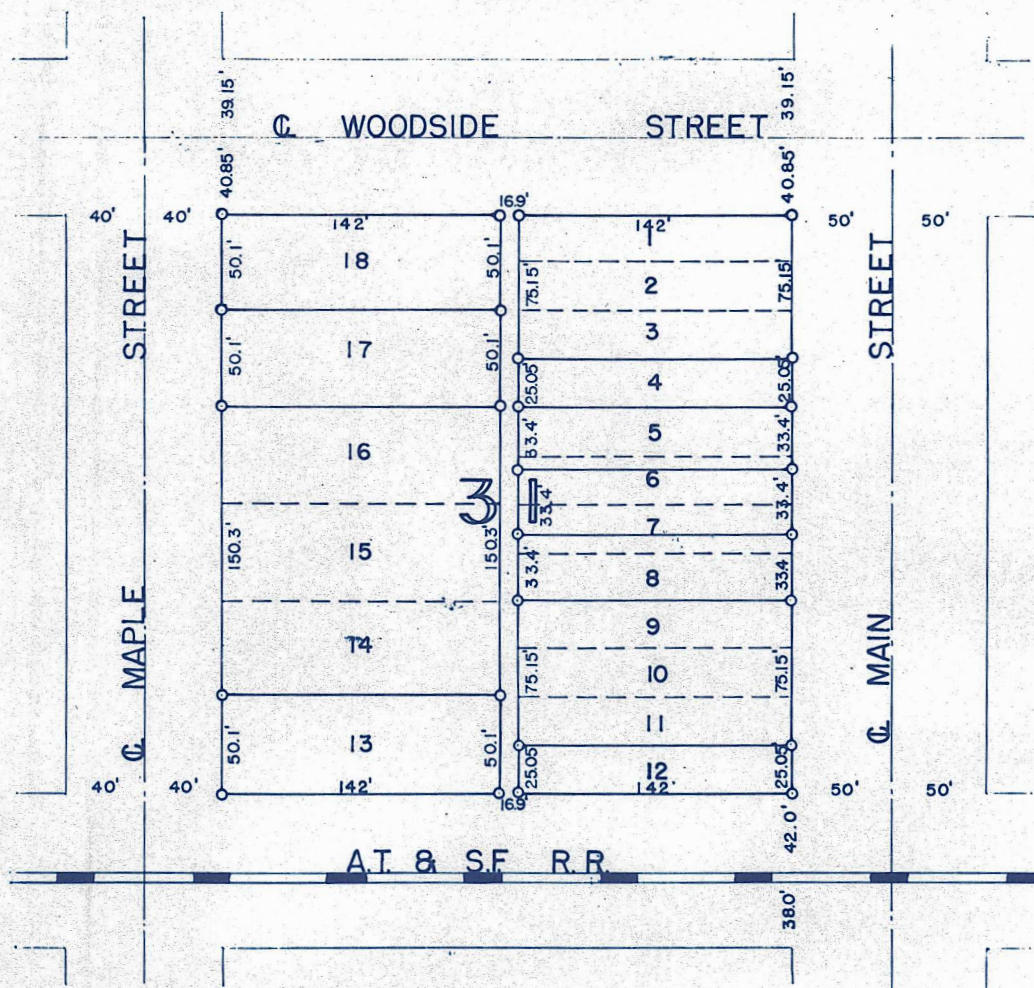
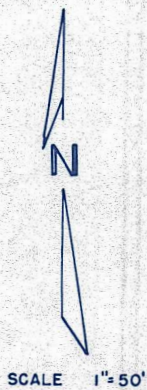


BLOCK 31 ORIGINAL TOWNSITE McPHERSON, KANSAS



State of Kansas,
County of McPherson, ss

I, Walter S. Smith, appointed County Surveyor of McPherson County, Kansas, do hereby certify that I did on the 31st day of August, 1950, survey Block 31, Original Townsite of McPherson, in McPherson County, Kansas, and did stake the tracts of land as recorded in the Office of the Register of Deeds, McPherson, Kansas, and that the accompanying plat is a true and legal exhibit of said survey.

(SEAL)

Walter S. Smith
Appointed County Surveyor
McPherson County, Kansas

MICROFILM