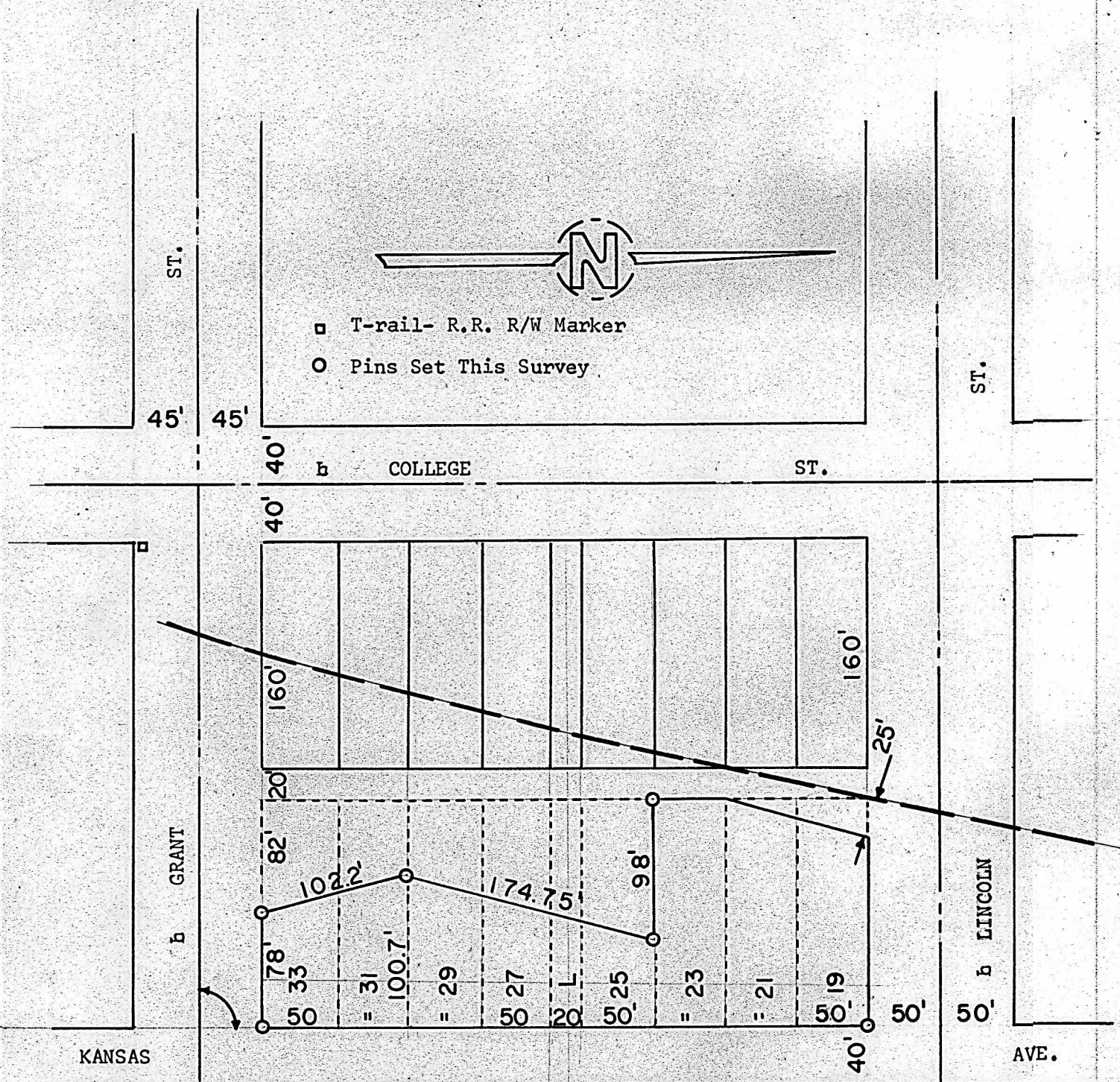


SURVEY LOTS 19, 21, 23, 25, L, 27, 29, 31 & 33
KANSAS AVE. ORIGINAL TOWN
LINDSBORG, KANSAS



U.P. R.R. R/W
State of Kansas)
County of McPherson) SS

I, Francis Rankin, County Engineer of McPherson, Kansas, do hereby certify that under my supervision, a survey was made of Part of Lots 19, 21, 23, 25, L, 27, 29, 31 & 33, Kansas Ave., Original Town to the City of Lindsborg, Kansas, and the above plat is a true exhibit of said survey as far as it is known to me.

Survey called for by Lindsborg Grain Inc.

Signed this 10 day of February 1969

Francis Rankin
Francis Rankin
County Engineer
McPherson, Kansas



MICROFILM