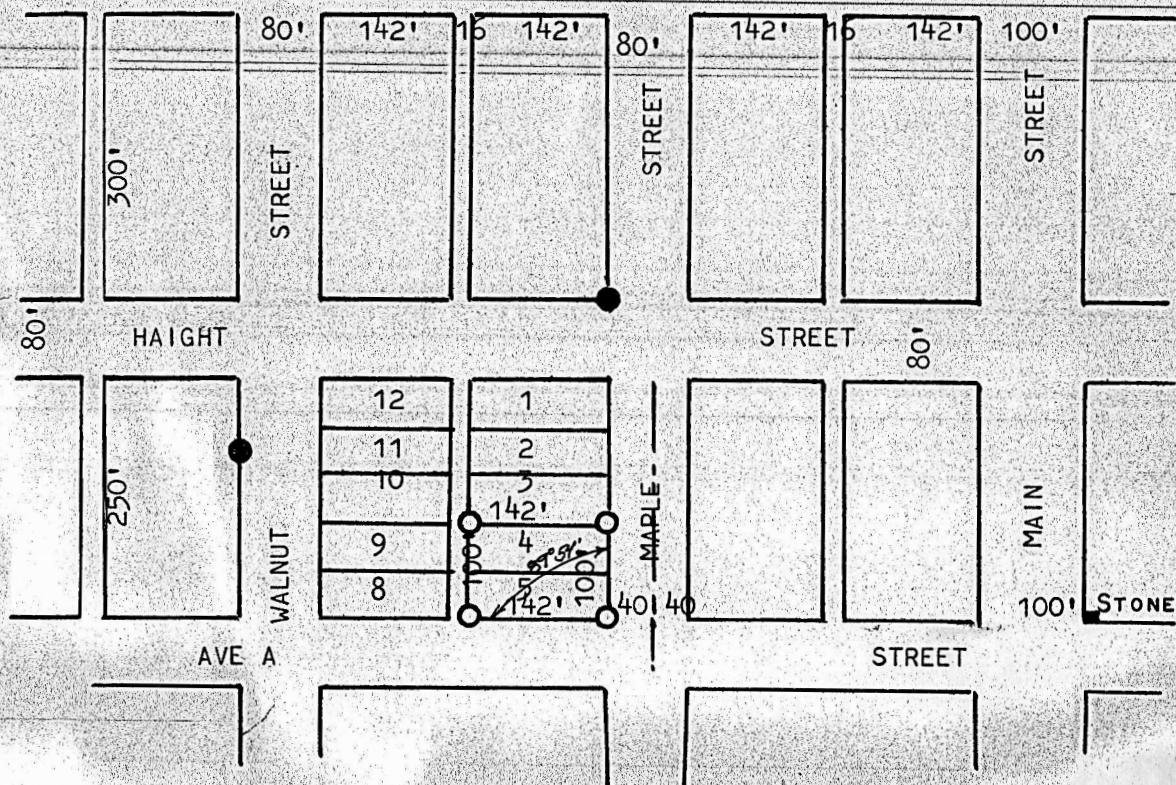


A SURVEY OF LOTS 4 & 5, BLOCK 1/2 29  
AMENDED SUPPLEMENTAL PLAT, MCPHERSON

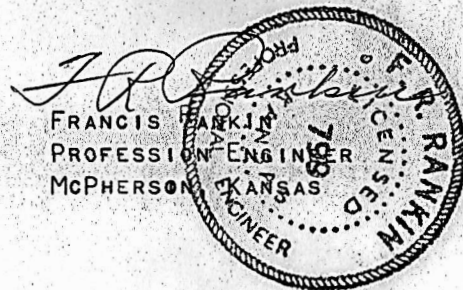


- PINS FOUND THIS SURVEY
- PINS SET THIS SURVEY

STATE OF KANSAS )  
COUNTY OF MCPHERSON) SS

I, FRANCIS RANKIN PROFESSIONAL ENGINEER OF THE STATE OF KANSAS, DO HERBY CERTIFY THAT UNDER MY SUPERVISION A SURVEY WAS MADE OF LOTS 4 & 5, BLOCK 1/2 29 AMENDED SUPPLEMENTAL PLAT OF MCPHERSON, KANSAS, AND THAT THE ACCOMPANYING PLAT IS A TRUE EXHIBIT OF SAID SURVEY AS FAR AS IT IS KNOWN TO ME.

SIGNED THIS 13 DAY OF APRIL, 1965



MICROFILM