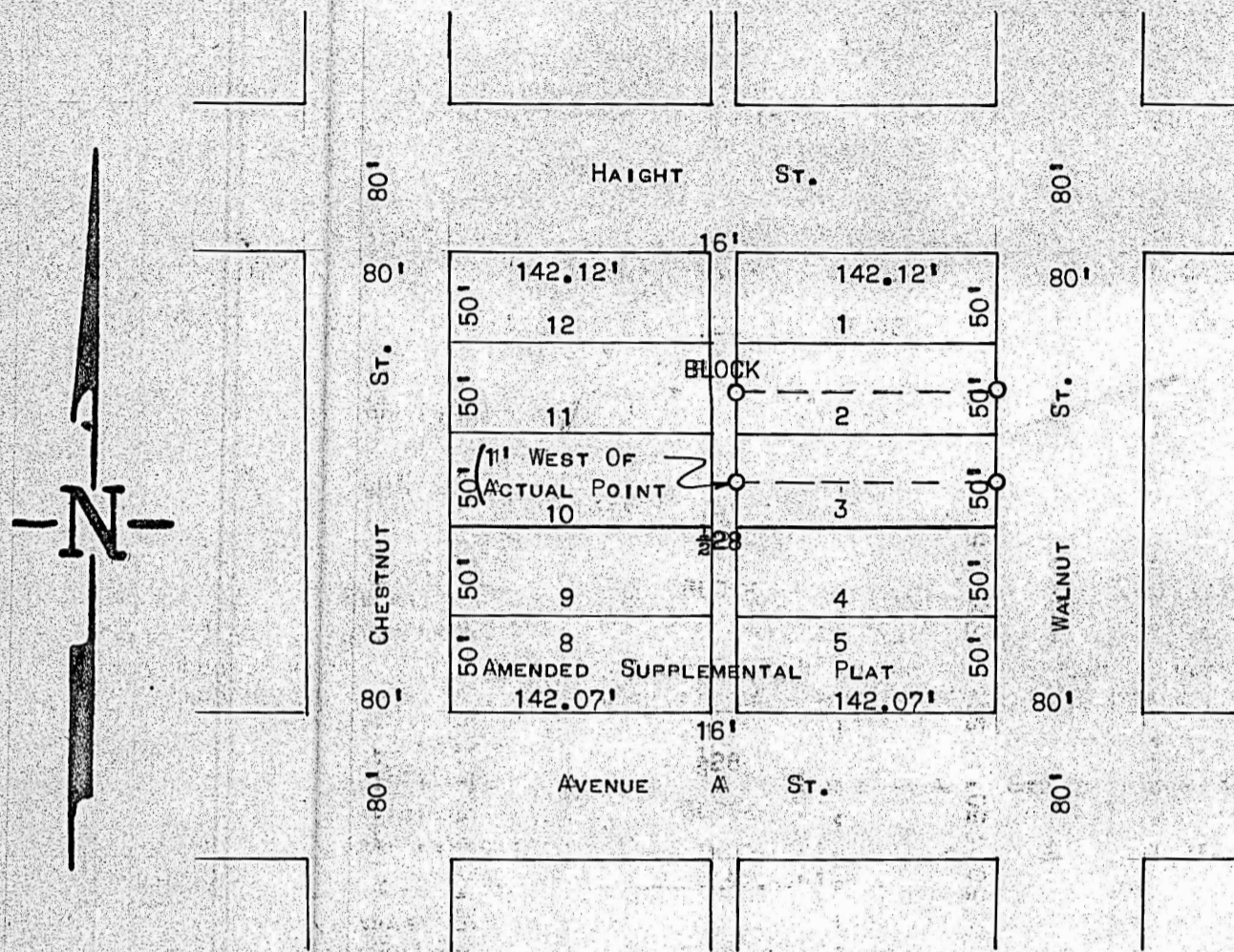


A SURVEY IN BLOCK $\frac{1}{2}$ 28 ORIGINAL TOWNSITE CITY OF McPHERSON



○ PINS SET ON THIS SURVEY

NOTE: CENTER LINES OF PAVEMENT ON HAIGHT, CHESTNUT, AND WALNUT ST. WERE USED AS ORIGINAL PLATTED CENTER LINE.

STATE OF KANSAS
COUNTY OF McPHERSON, SS

I, FRANCIS D. WAGNER, COUNTY ENGINEER, McPHERSON COUNTY, DO HEREBY CERTIFY THAT I DID CAUSE TO BE DONE ON THE 6TH DAY OF JULY 1956, A SURVEY OF THE SOUTH HALF OF LOT 2 & THE NORTH HALF OF LOT 3 BLOCK $\frac{1}{2}$ 28 ORIGINAL TOWNSITE, OF McPHERSON KANSAS, AND THAT THE ACCOMPANYING PLAT IS A TRUE EXHIBIT OF SAID SURVEY.

Francis D. Wagner

FRANCIS D. WAGNER
COUNTY ENGINEER
McPHERSON COUNTY

MICROFILM

JULY 9, 1956

