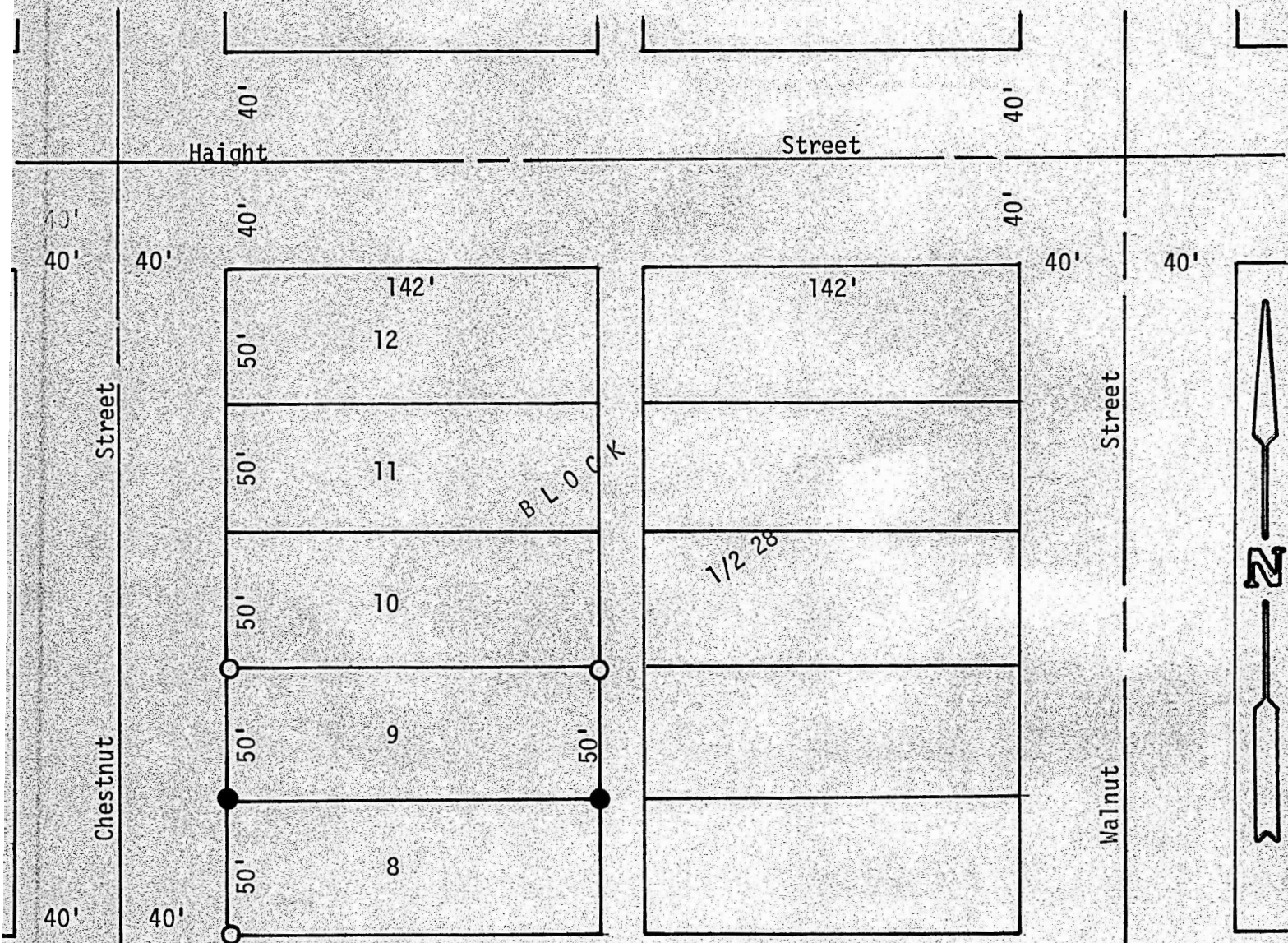


A SURVEY OF LOT 9, BLOCK 1/2 28,
ORIGINAL TOWN, MCPHERSON, KANSAS



- Pins Set This Survey
- Pins Set Previous Survey

State of Kansas)
County of McPherson) SS

I, F. R. Rankin, County Engineer of McPherson County, Kansas, do hereby certify that under my supervision a survey was made of Lot 9, Block 1/2 28, Original Town to the City of McPherson, Kansas. The above plat is a true exhibit of said survey as far as it is known to me.

Survey called for by Sadie Hiebert

Signed on this 20 day of March, 1972

F. R. Rankin
F. R. Rankin, P. E.
County Engineer
McPherson County, Kansas

