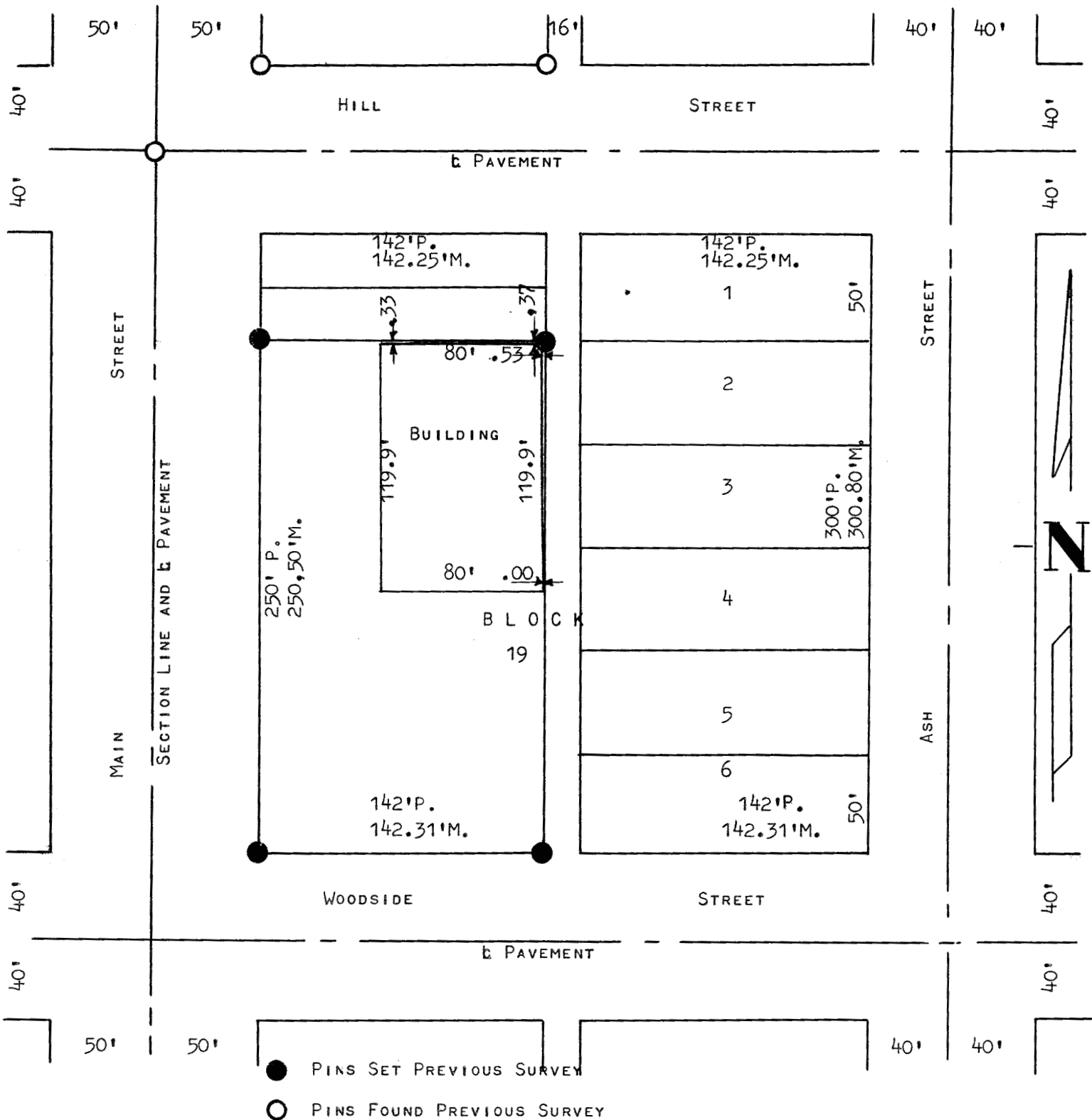


CHECK SURVEY OF PROPERTY LINES  
BLOCK 19 ORIGINAL TOWN



STATE OF KANSAS )  
COUNTY OF McPHERSON ) SS

I, FRANCIS D. WAGNER, COUNTY ENGINEER OF McPHERSON COUNTY, KANSAS  
DO HEREBY CERTIFY THAT I DID CAUSE TO BE DONE ON THE 8TH DAY OF