

McPherson Engineering & Land Surveying Services
P.O. Box 662
McPherson, KS 67460
241-0950 FAX 241-5086

Board of Public Utilities
Part of Block 87 OTS to McPherson

On August 26, 2003 this survey was completed in the field by Melanie L. Thrower.

Legal Description: The south 114 feet of Block 87 OTS being all of Lots 5 and 6 and the south 13.48 feet prorate (13.41' Plat) of Lot 4, Block 87 OTS containing 0.340 acres more or less in the City of McPherson, McPherson County, Kansas.



SCALE 1" = 80'

(P) Plat (M) Measured

● Set 5/8" x 24" Rebar w/ surveyor cap

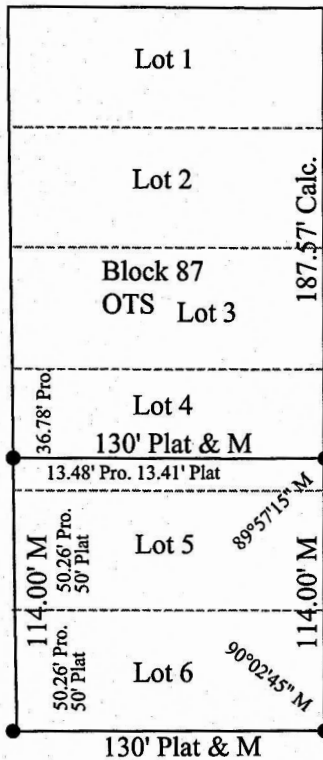
○ Fd. Monument Bar

Kansas Avenue

Block 82
OTS

1/2" Bar

Elizabeth (80' R/W)



683.14' M 680' Plat

Chestnut (80' R/W)

80' M

Block 88
OTS

RR Spike and nail

Sutherland (80' R/W)

380.46' M 380' Plat

Maple (80' R/W)

1/2" Bar