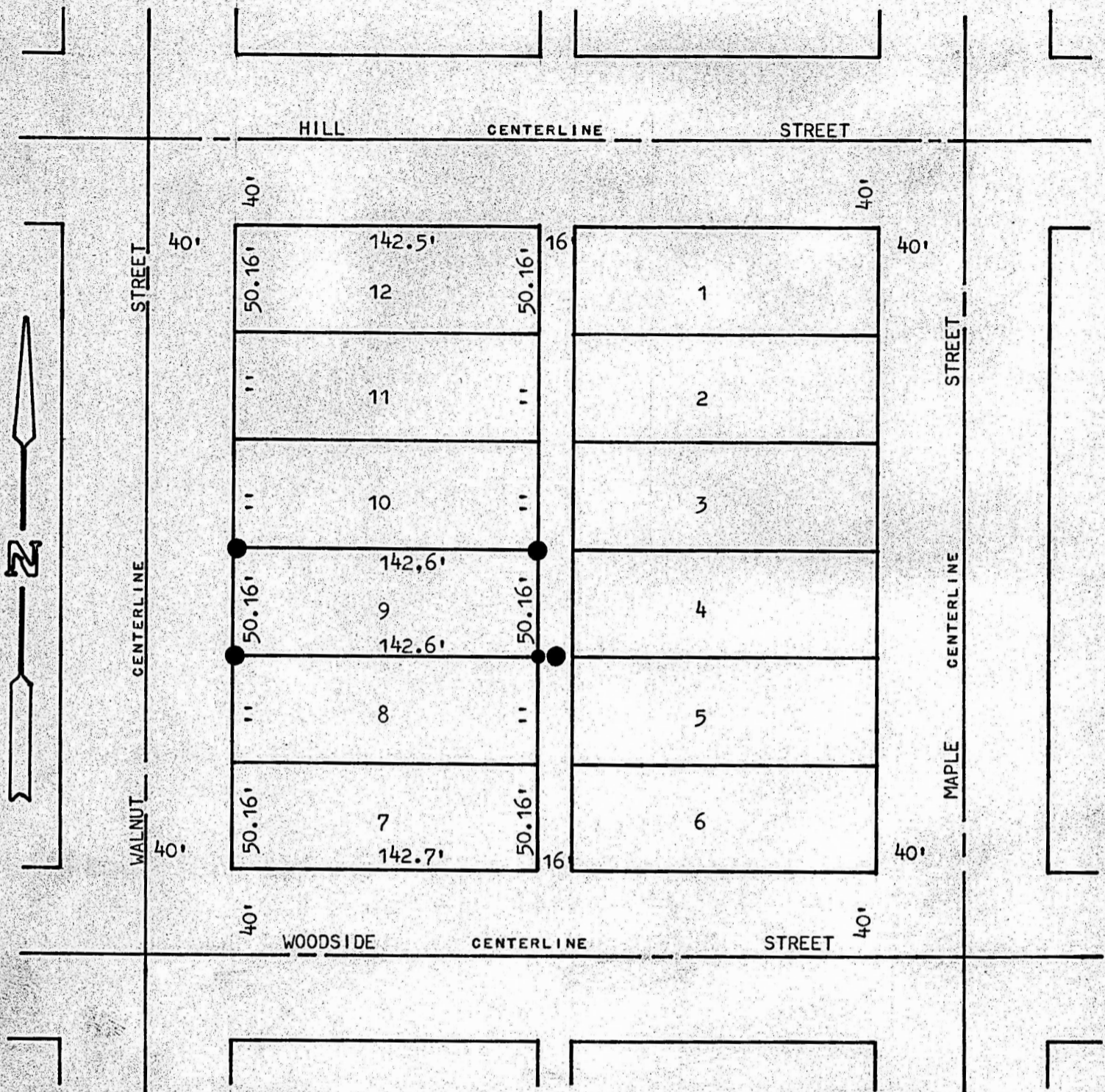


A SURVEY OF LOT 9
BLOCK 17 ORIGINAL TOWN
MCPHERSON, KANSAS



- PINS SET THIS SURVEY
- NAIL SET IN CONCRETE THIS SURVEY

STATE OF KANSAS)
COUNTY OF MCPHERSON) SS

I, FRANCIS RANKIN, COUNTY ENGINEER OF MCPHERSON COUNTY, KANSAS,
DO HEREBY CERTIFY THAT UNDER MY SUPERVISION A SURVEY WAS MADE OF
LOT 9, BLOCK 17, ORIGINAL TOWNSITE TO THE CITY OF MCPHERSON, KANSAS,
AND THAT THE ABOVE PLAT IS A TRUE EXHIBIT OF SAID SURVEY AS FAR AS
IT IS KNOWN TO ME.

SURVEY CALLED FOR BY H. R. LOCKWOOD.

SIGNED THIS 7/2 DAY OF JULY 1971

Francis Rankin
FRANCIS RANKIN
COUNTY ENGINEER
MCPHERSON COUNTY, KANSAS

