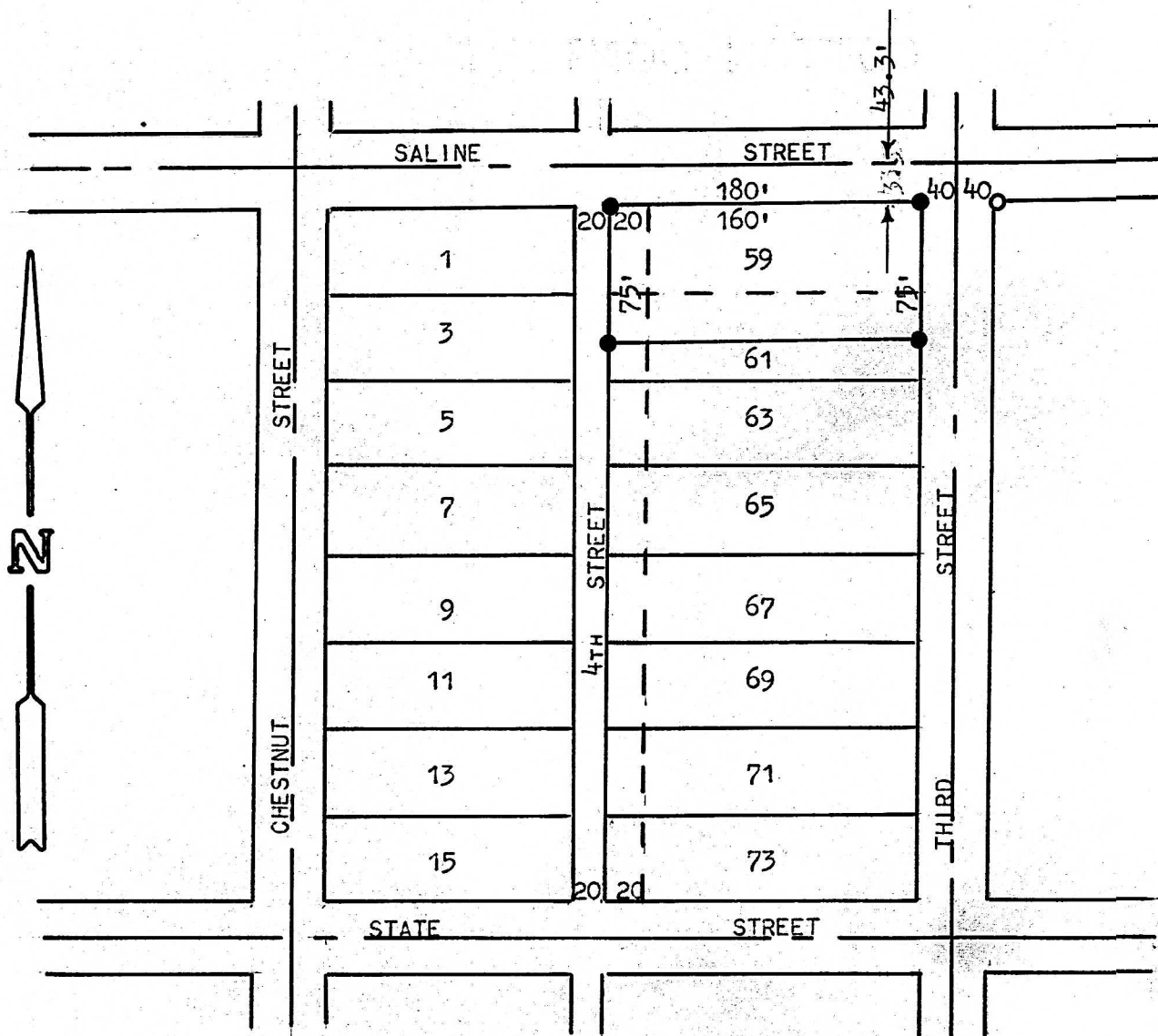


A SURVEY OF LOTS 59 AND THE NORTH 1/2  
OF 61, OF THE ORIGINAL TOWN AT THIRD  
ST. AND SALINE ST., LINDSBORG, KANSAS



PIN FOUND THIS SURVEY  
PINS SET THIS SURVEY

NOTE: LOTS 59 TO 73 SHOWN ABOVE  
INCLUDE THE EAST 1/2 OF 4TH STREET,  
ORIGINAL PLOT BEING 40' WIDE.

STATE OF KANSAS )  
COUNTY OF MCPHERSON )

I, FRANCIS RANKIN, COUNTY ENGINEER OF MCPHERSON COUNTY, KANSAS,  
DO HEREBY CERTIFY THAT UNDER MY SUPERVISION A SURVEY WAS MADE OF  
LOTS 59 AND THE NORTH 1/2 OF 61, OF THE ORIGINAL TOWN AT THIRD STREET  
AND SALINE STREET, LINDSBORG, KANSAS, AND THAT THE ABOVE PLAT IS A  
TRUE EXHIBIT OF SAID SURVEY AS FAR AS IT IS KNOWN TO ME.

SURVEY CALLED FOR BY LOIS FLOURNAY.

SIGNED THIS 13 DAY OF JUNE, 1973.

