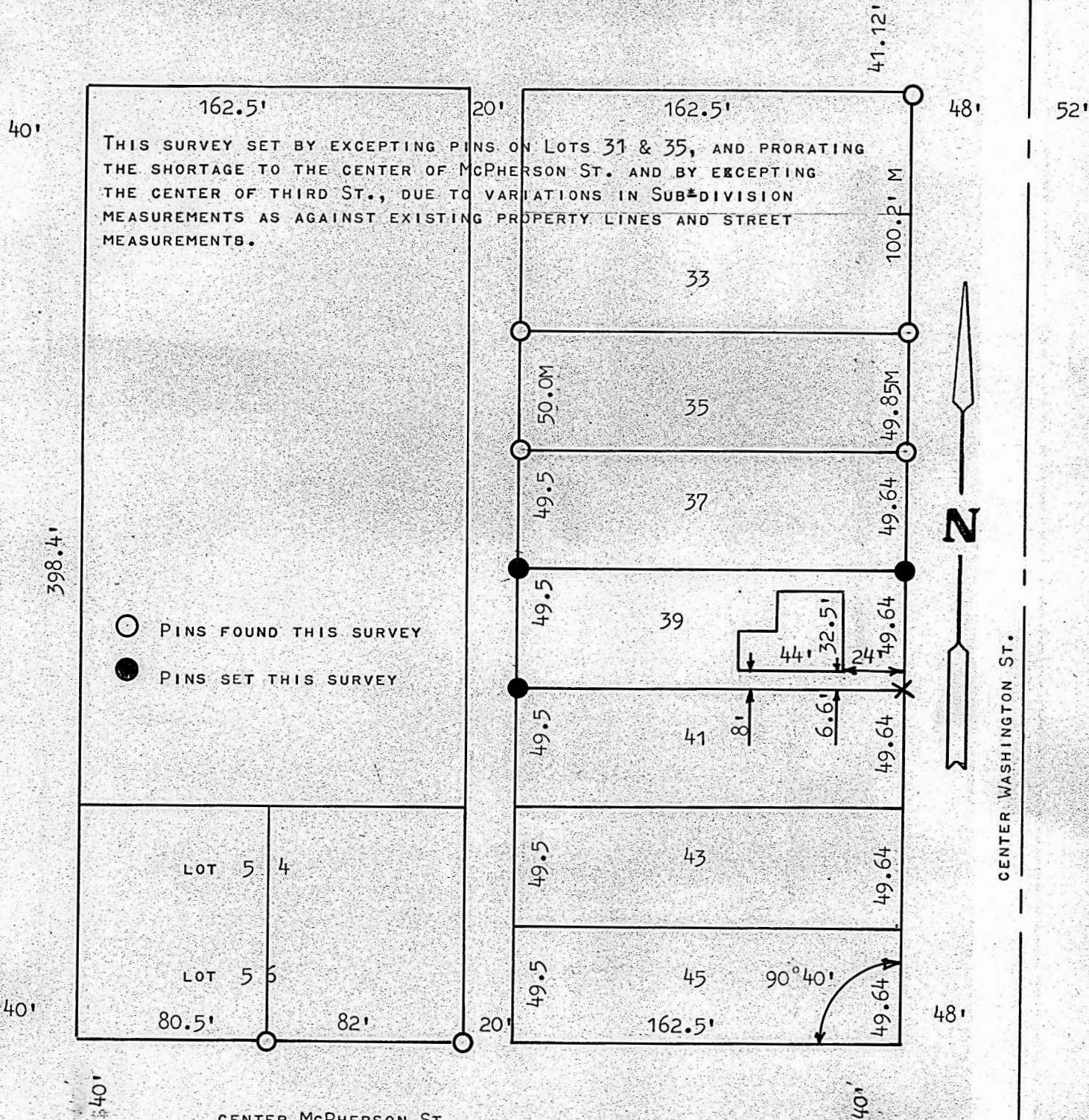


A SURVEY OF LOT 39 SOUTH WASHINGTON ST.
LINDSBORG, KANSAS

CENTER UNION ST.

CENTER McPHERSON ST.

CENTER WASHINGTON ST.



STATE OF KANSAS)
COUNTY OF McPHERSON) SS

I, FRANCIS R. RANKIN, PROFESSIONAL ENGINEER OF THE STATE OF KANSAS DO HEREBY CERTIFY THAT UNDER MY SUPERVISION A SURVEY WAS MADE OF LOT 39, SOUTH WASHINGTON STREET, TO THE CITY OF LINDSBORG, KANSAS AND THAT THE ACCOMPANYING PLAT IS A TRUE EXHIBIT OF SAID SURVEY AS FAR AS IT IS KNOWN TO ME.

Signed THIS 1 DAY OF JUNE, 1967

SURVEY CALLED FOR BY ERNEST L. SHELDEN

FRANCIS R. RANKIN
PROFESSIONAL ENGINEER
McPHERSON, KANSAS

R. RANKIN
799
KANSAS
PROFESSIONAL ENGINEER

MICROFILM