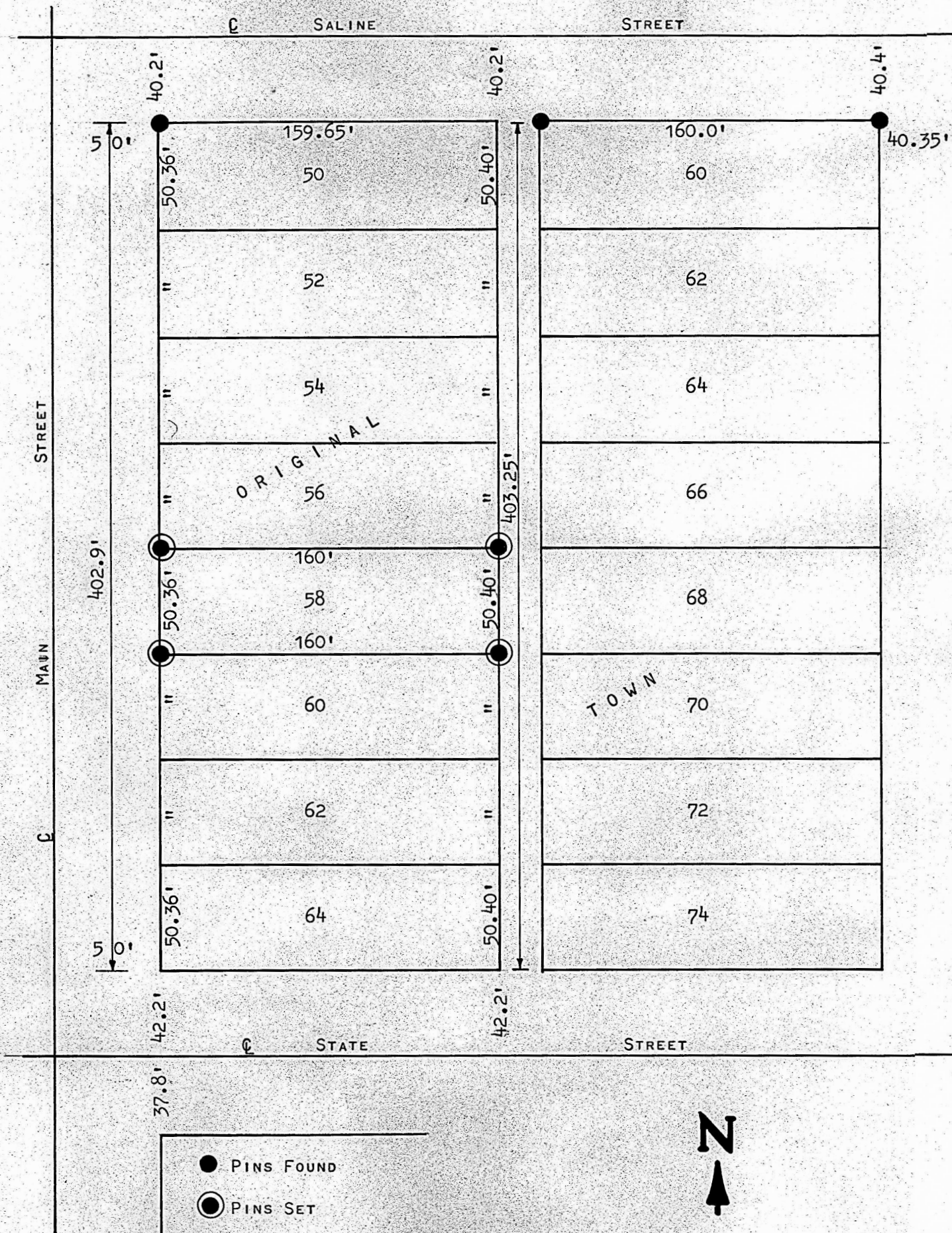


A SURVEY OF LOT 58 ON MAIN STREET IN THE  
CITY OF LINDSBURG, KANSAS



STATE OF KANSAS )  
COUNTY OF McPHERSON ) SS

I, F. R. RANKIN, COUNTY ENGINEER OF McPHERSON COUNTY, KANSAS, DO HEREBY CERTIFY, THAT THE SURVEY WAS MADE UNDER MY SUPERVISION OF LOT 58, MAIN STREET IN THE CITY OF LINDSBURG AND THE ABOVE PLAT IS A TRUE EXHIBIT OF SAID SURVEY AS FAR AS IT IS KNOWN TO ME.

SURVEY CALLED FOR BY RAYMOND FINNEY

SIGNED THIS 16 DAY OF NOVEMBER, 1966.

F. R. RANKIN  
COUNTY ENGINEER

