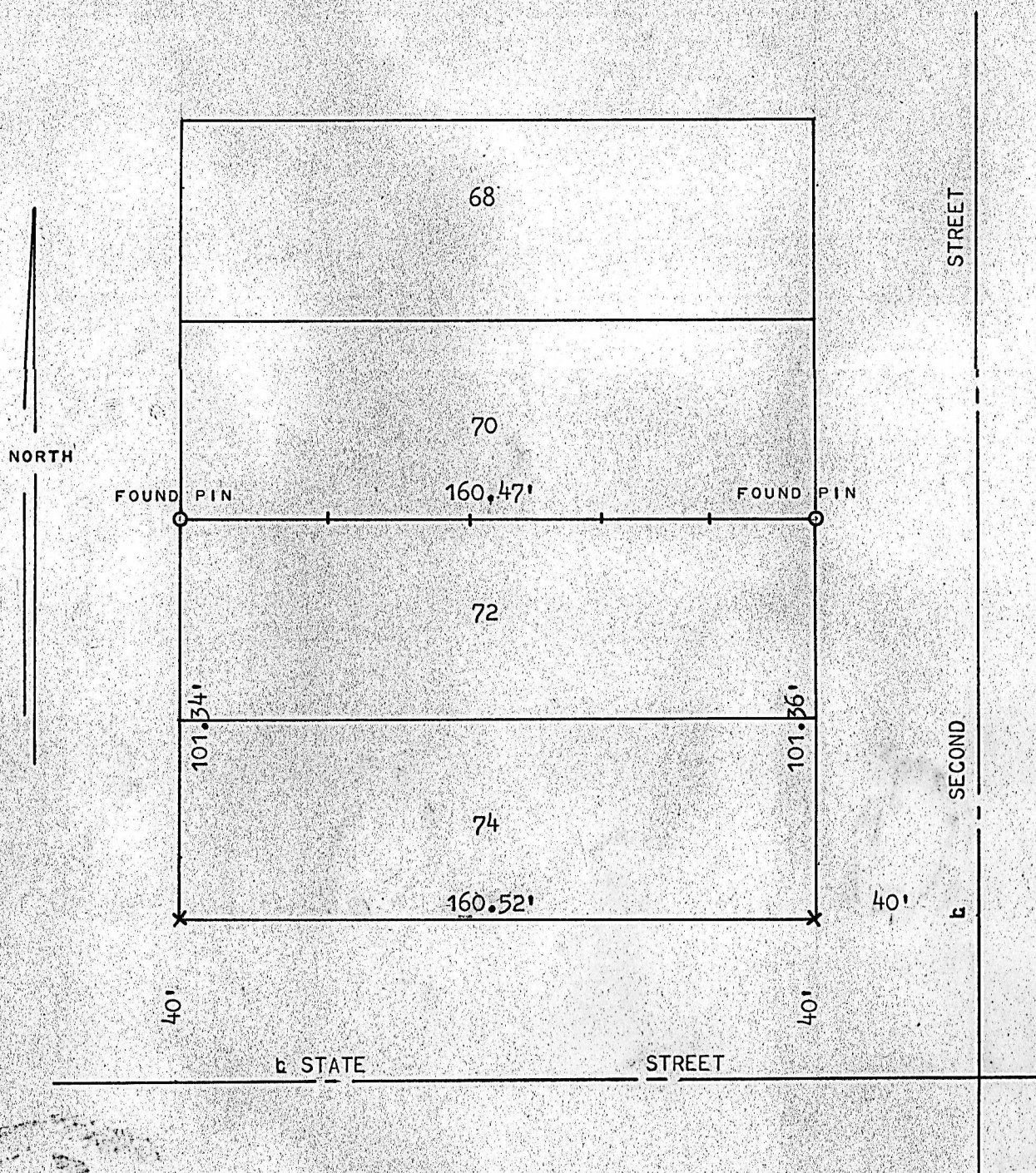


SET LINE STAKE BETWEEN LOTS 72 & 74 SECOND ST.  
ORIGINAL TOWN, LINDSBORG, KANSAS



ALL CORNERS WERE SET ON A PREVIOUS SURVEY BY FRANCIS WAGNER IN NOVEMBER, 1960.

THIS DATE, JUNE 24, 1964, SET LINE OF STAKES BETWEEN LOTS 72 & <sup>70</sup>~~74~~ SECOND STREET, ORIGINAL TOWN, LINDSBORG KANSAS.



*Francis R. Rankin*  
FRANCIS R. RANKIN  
COUNTY ENGINEER  
McPHERSON, KANSAS