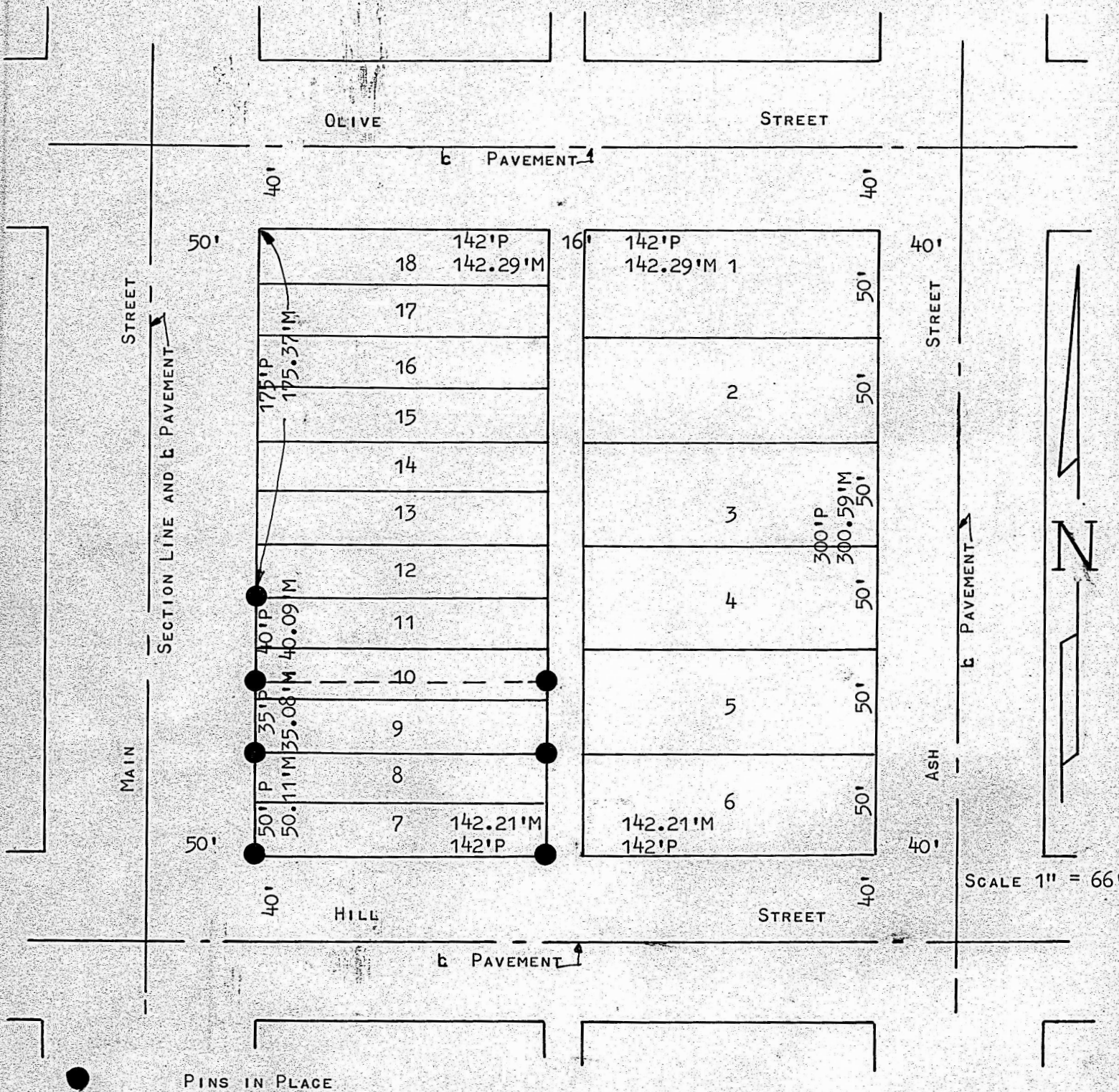


A SURVEY OF LOTS 7 & 8
BLOCK 6 ORIGINAL TOWN

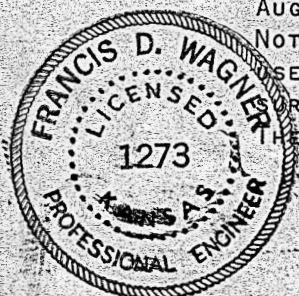


I, FRANCIS D. WAGNER COUNTY ENGINEER OF McPHERSON COUNTY KANSAS DO HEREBY CERTIFY THAT I DID CAUSE TO BE DONE ON THE 2ND DAY OF AUGUST, 1960 A SURVEY OF LOTS 7 & 8 BLOCK 6 OF THE ORIGINAL TOWN SITE OF McPHERSON KANSAS, AND THAT THE ACCOMPANYING PLAT IS A TRUE EXHIBIT OF SAID SURVEY.

AUGUST 2, 1960

NOTE: CENTERLINES OF EXISTING PAVEMENTS HAVE BEEN USED AS PLATED CENTERLINES OF STREETS ON PAST SURVEYS. THIS POLICY WAS CONTINUED ON THIS SURVEY. THE EXCESS IN THE BLOCK WAS THEN PRORATED.

MICROFILM



Francis D. Wagner
FRANCIS D. WAGNER
COUNTY ENGINEER
McPHERSON COUNTY