

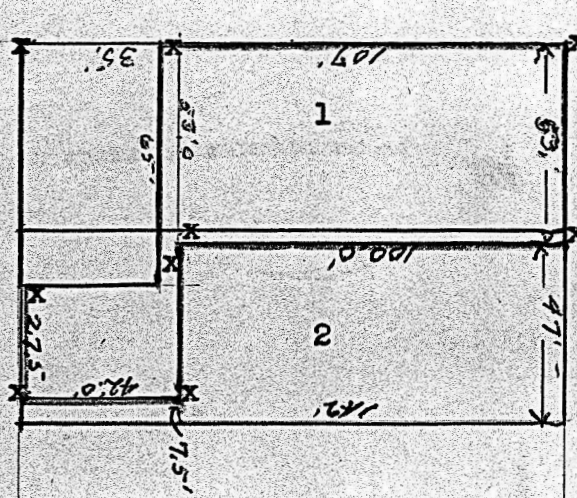
H. A. ROWLAND • Kansas Licensed Civil Engineer

## Member

National Society Professional Engineers  
 Kansas Society Professional Engineers  
 Kansas Engineering Society

PHONE 796 X

McPHERSON, KANSAS



Scale 1 in. to 50 ft.

## Scale

STATE OF KANSAS?

McPherson County, ss.,

THIS IS TO CERTIFY, That, I have made a survey of a tract as shown by the above plat which accords with the same. The said tract is in lots 1 and 2 in Block 140 of the Original Town of McPherson, Kansas. The corners marked by an x on the plat were marked upon the ground by iron pine.

The land located within the lines colored red are in the name of Geo. A. Sellers.

Dated at McPherson, Kas., Sep. 25th 1950.



Registered Professional Engineer.

MICROFILM