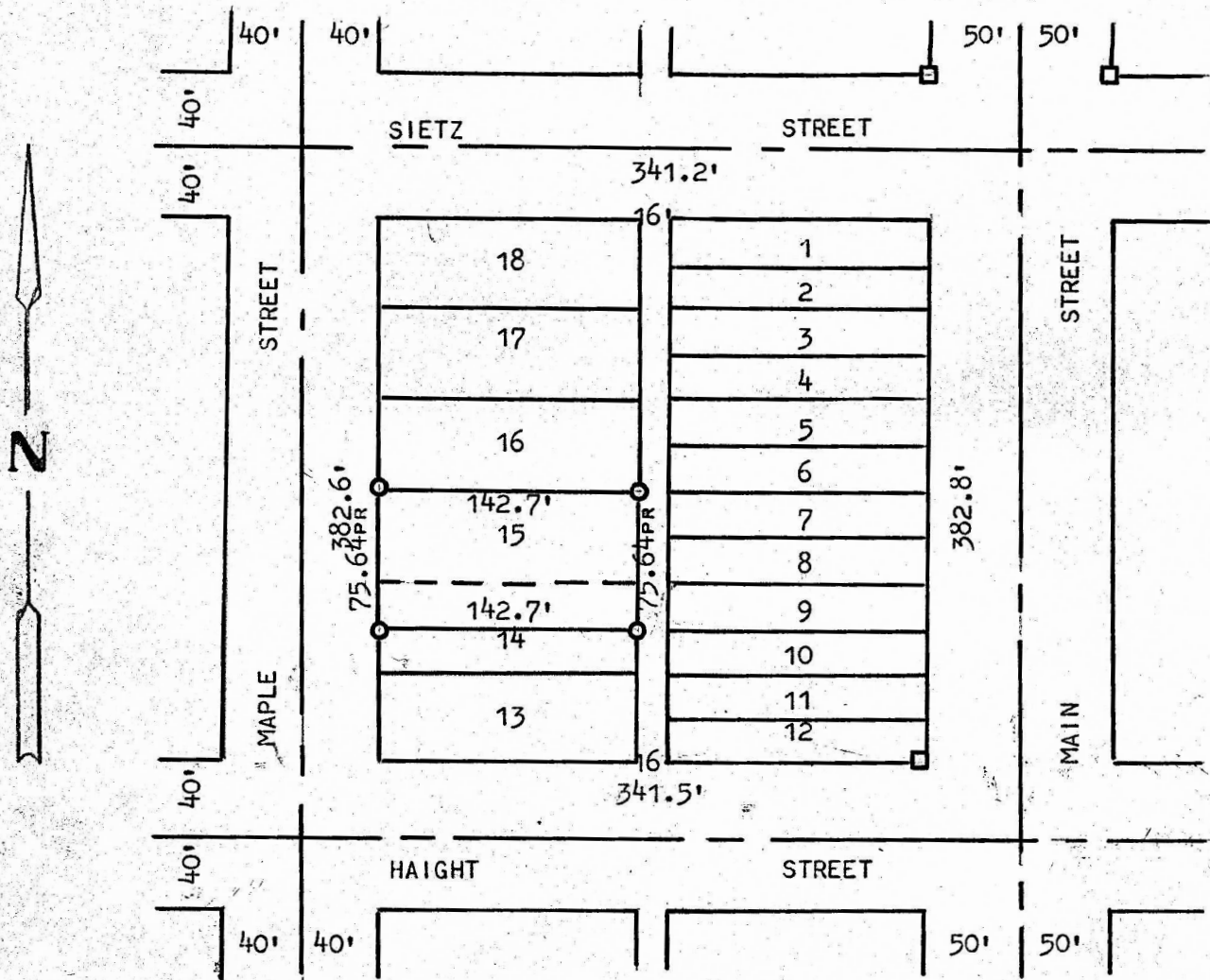


A SURVEY OF LOT 15 AND THE NORTH 1/2
OF 14, BLOCK 138, ORIGINAL TOWN,
McPHERSON, KANSAS



- ☐ STONE FOUND THIS SURVEY
☐ PINS SET THIS SURVEY

STATE OF KANSAS)
COUNTY OF MCPHERSON) SS

I, FRANCIS RANKIN, COUNTY ENGINEER OF MCPHERSON COUNTY, KANSAS, DO HEREBY CERTIFY THAT UNDER MY SUPERVISION A SURVEY WAS MADE OF LOT 15 AND THE NORTH 1/2 OF 14, BLOCK 138, ORIGINAL TOWN SITE TO THE CITY OF MCPHERSON, KANSAS, AND THE ABOVE PLAT IS A TRUE EXHIBIT OF SAID SURVEY AS FAR AS IT IS KNOWN TO ME.

SURVEY CALLED FOR BY RALPH HODGES

SIGNED THIS 11 DAY OF JUNE, 1973

Francis Rankin
FRANCIS RANKIN
COUNTY ENGINEER
McPHERSON, KANSAS



MICROFILM