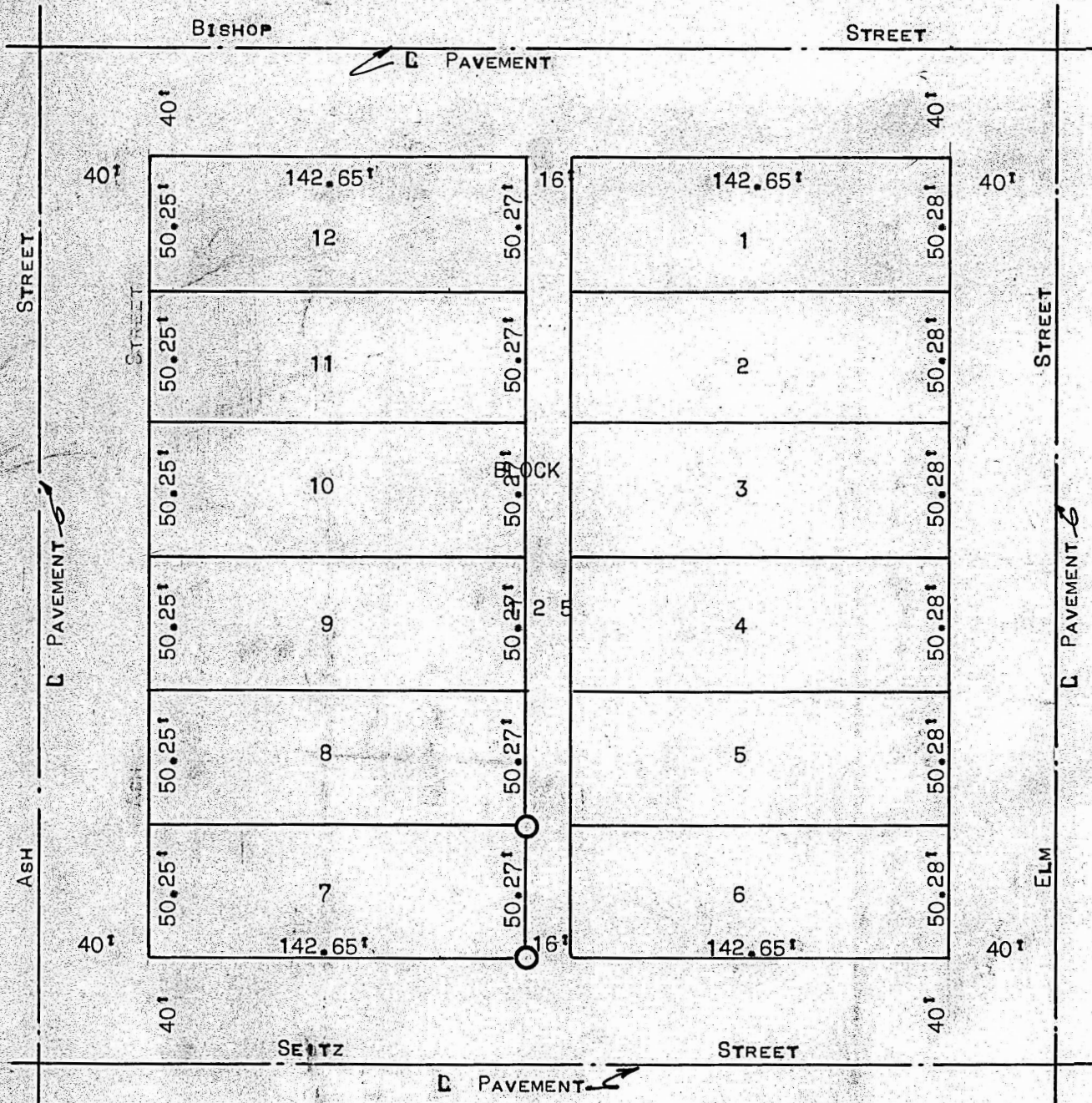
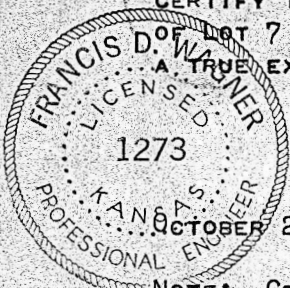


A SURVEY OF LOT 7 BLOCK 125 ORIGINAL TOWN  
MCPHERSON, KANSAS



STATE OF KANSAS ) ss  
COUNTY OF MCPHERSON)

I, FRANCIS D. WAGNER, COUNTY ENGINEER OF MCPHERSON COUNTY, KANSAS, DO HEREBY CERTIFY THAT I DID CAUSE TO BE DONE ON THE 25TH DAY OF OCTOBER, 1956 A SURVEY OF LOT 7 BLOCK 125 ORIGINAL TOWN, MCPHERSON AND THAT THE ACCOMPANYING PLAT IS A TRUE EXHIBIT OF SAID SURVEY



*Francis D. Wagner*

FRANCIS D. WAGNER  
COUNTY ENGINEER  
MCPHERSON, KANSAS

NOTE: CENTERLINES OF EXISTING PAVEMENTS HAVE BEEN USED AS PLATED CENTER LINES OF STREETS, ON PAST SURVEYS. THIS POLICY WAS CONTINUED ON THIS SURVEY. THE EXCESS IN THE BLOCK WAS THEN PRORATED.