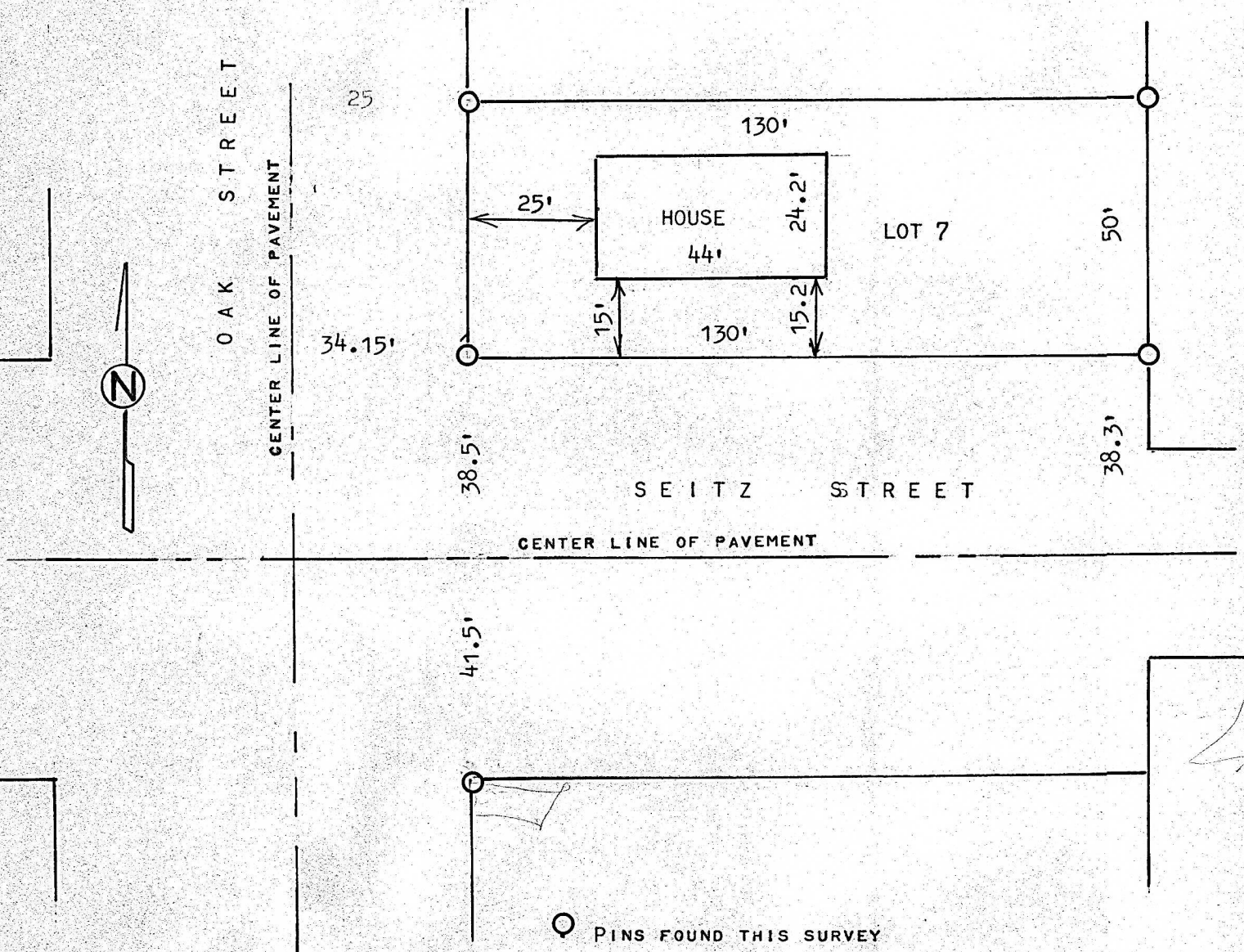


A SURVEY OF LOT 7, BLOCK 123
ORIGINAL TOWN, MCPHERSON, KANSAS



STATE OF KANSAS)
COUNTY OF MCPHERSON) SS

I, MELVIN FERGUSON, PROFESSIONAL ENGINEER OF THE STATE OF KANSAS DO HEREBY CERTIFY THAT UNDER MY SUPERVISION A SURVEY WAS MADE TO LOCATE HOUSE ON LOT 7, BLOCK 123 ORIGINAL TOWN SITE TO THE CITY OF MCPHERSON, KANSAS, AND THAT THE ABOVE PLAT IS A TRUE EXHIBIT OF SAID SURVEY AS FAR AS IT IS KNOWN TO ME.

SURVEY CALLED FOR BY MCPHERSON BANK AND TRUST (C. WILLIAMS)

Signed this 17th DAY OF AUGUST, 1981

Melvin Ferguson
MELVIN FERGUSON
PROFESSIONAL ENGINEER
MCPHERSON, KANSAS

