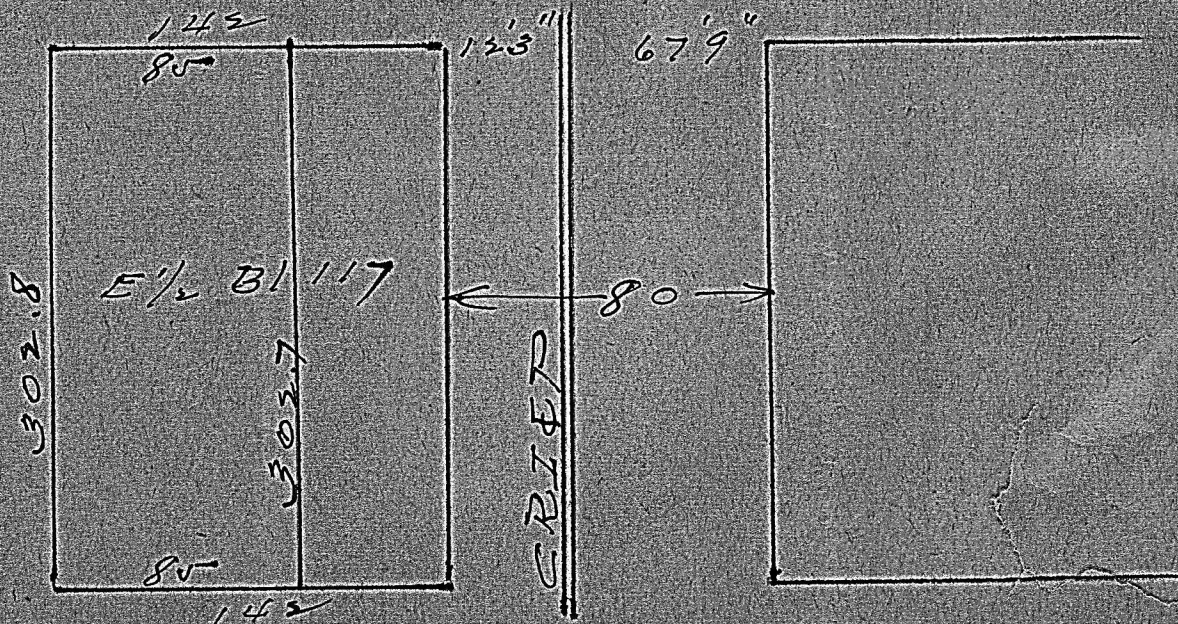


Block 117



The above is a plat of a survey made by me April 25, 1934, for the National Supply Co. to locate their lease from the C R I & P R R, being part of the east half of block 117, original town of McPherson.

While the lease calls for the north and south distance to be 300.0 feet, I found this distance to over run as shown above.

The four corners are marked with steel rods.

Guy Hall, County Engineer.

MICROFILM