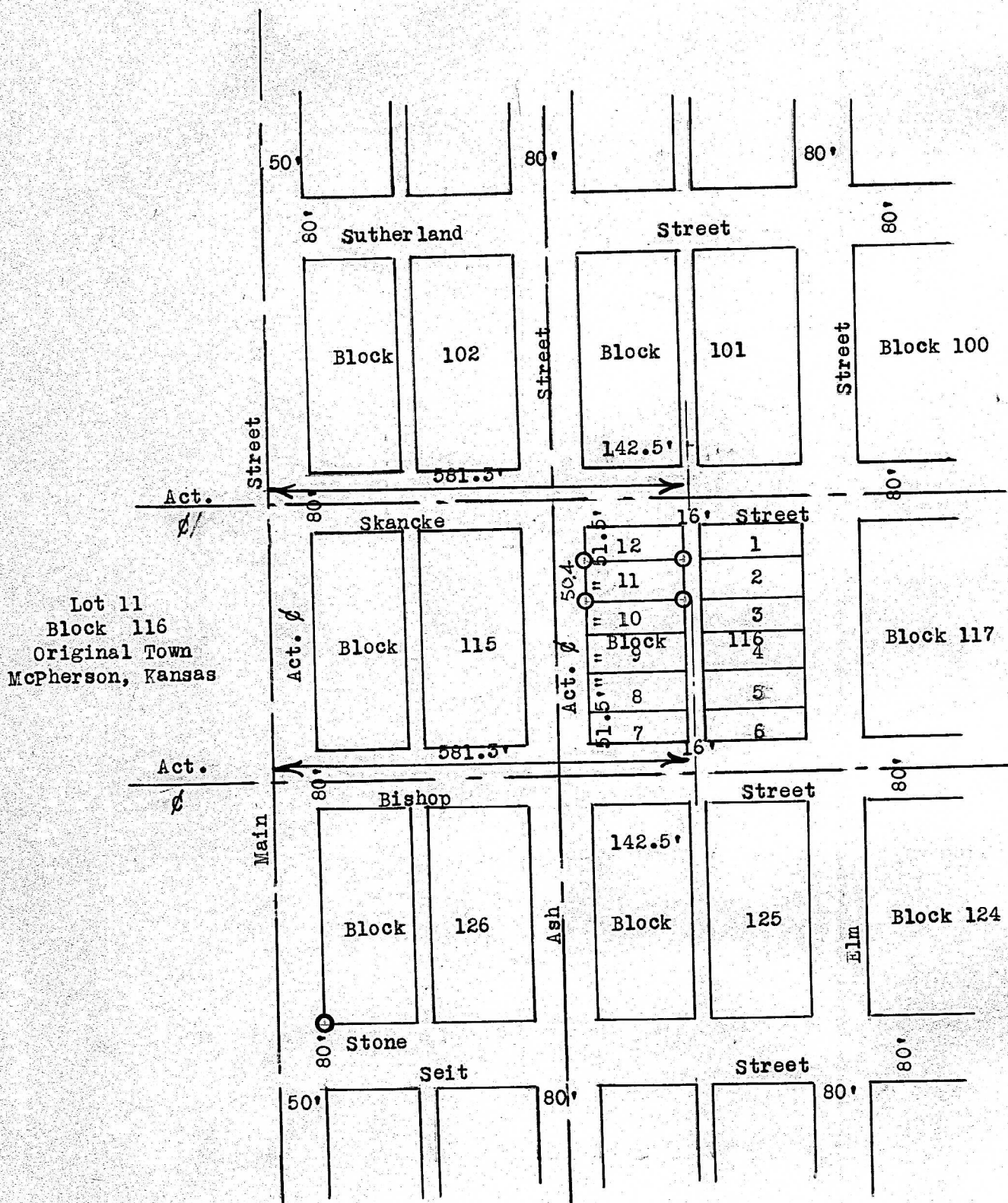


Block 116

31st October, 1952



State of Kansas, County of McPherson, ss

I, Francis D. Wagner, County Engineer of McPherson County, Kansas did on the 31st day of October, 1952 a survey that determined the corners of lot 11, Block 116, Original Town in the City of McPherson, Kansas, and that the accompanying plat is a true exhibit of said survey.

FRANCIS D. WAGNER  
County Engineer  
McPherson County

Note: Plat in error lots are 50.4' Lot 11 Block 116

MICROFILM