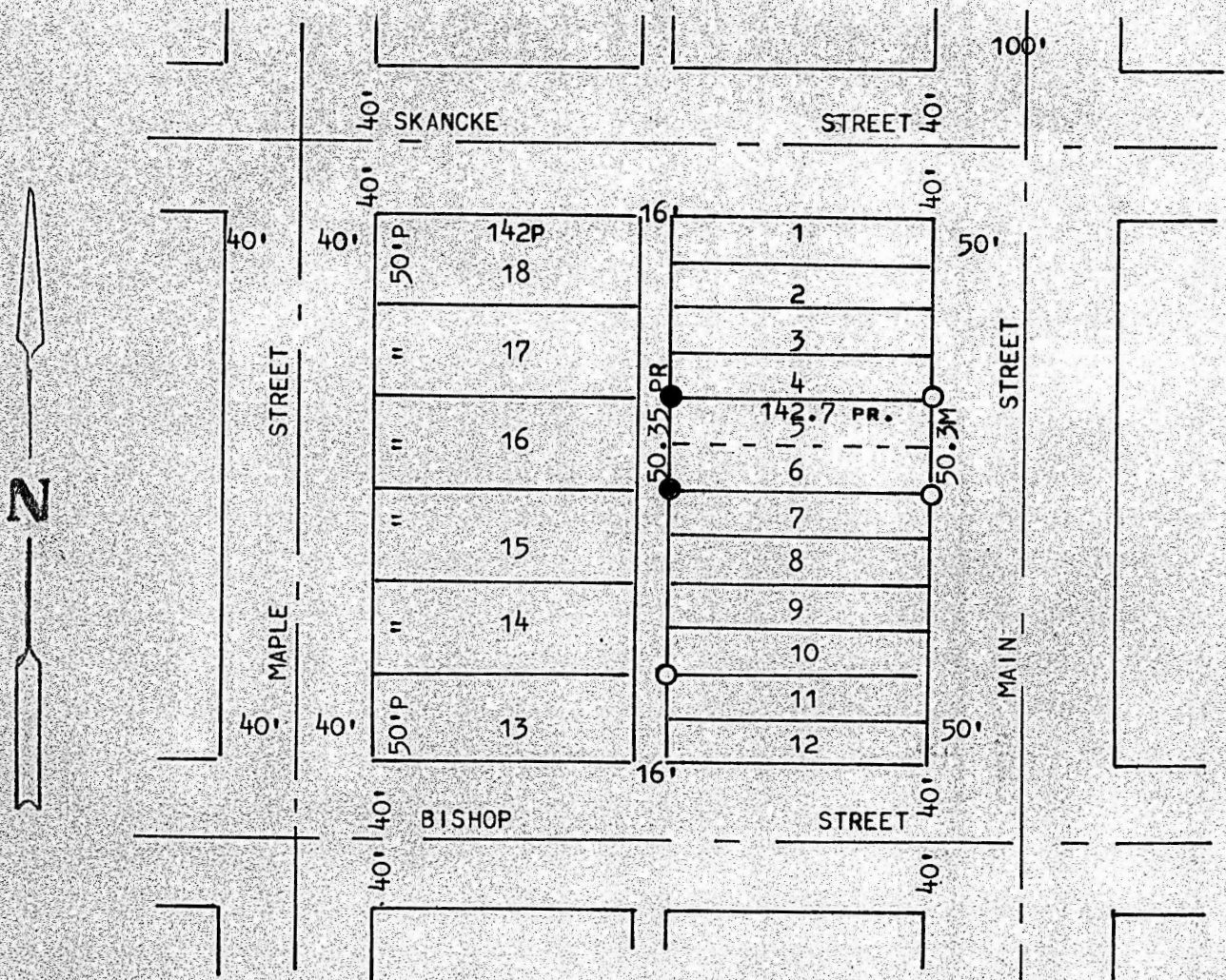


A SURVEY OF LOTS 5 & 6, BLOCK 114  
ORIGINAL TOWN, MCPHERSON, KANSAS



- PINS FOUND THIS SURVEY
- PINS SET THIS SURVEY

STATE OF KANSAS )  
COUNTY OF MCPHERSON ) SS

I, FRANCIS RANKIN, COUNTY ENGINEER OF MCPHERSON COUNTY KANSAS DO HEREBY CERTIFY THAT UNDER MY SUPERVISION A SURVEY WAS MADE OF LOTS 5 & 6, BLOCK 114, ORIGINAL TOWN SITE, TO THE CITY OF MCPHERSON, KANSAS, AND THE ABOVE PLAT IS A TRUE EXHIBIT OF OF SAID SURVEY AS FAR AS IT IS KNOWN TO ME.

SURVEY CALLED FOR BY BILL ADAMS FOR CHARLES WITHROW JR.

SIGNED THIS 18 DAY OF NOVEMBER, 1972

*Francis Rankin*  
F. RANKIN  
LICENSED  
700  
KANSAS  
PROFESSIONAL ENGINEER