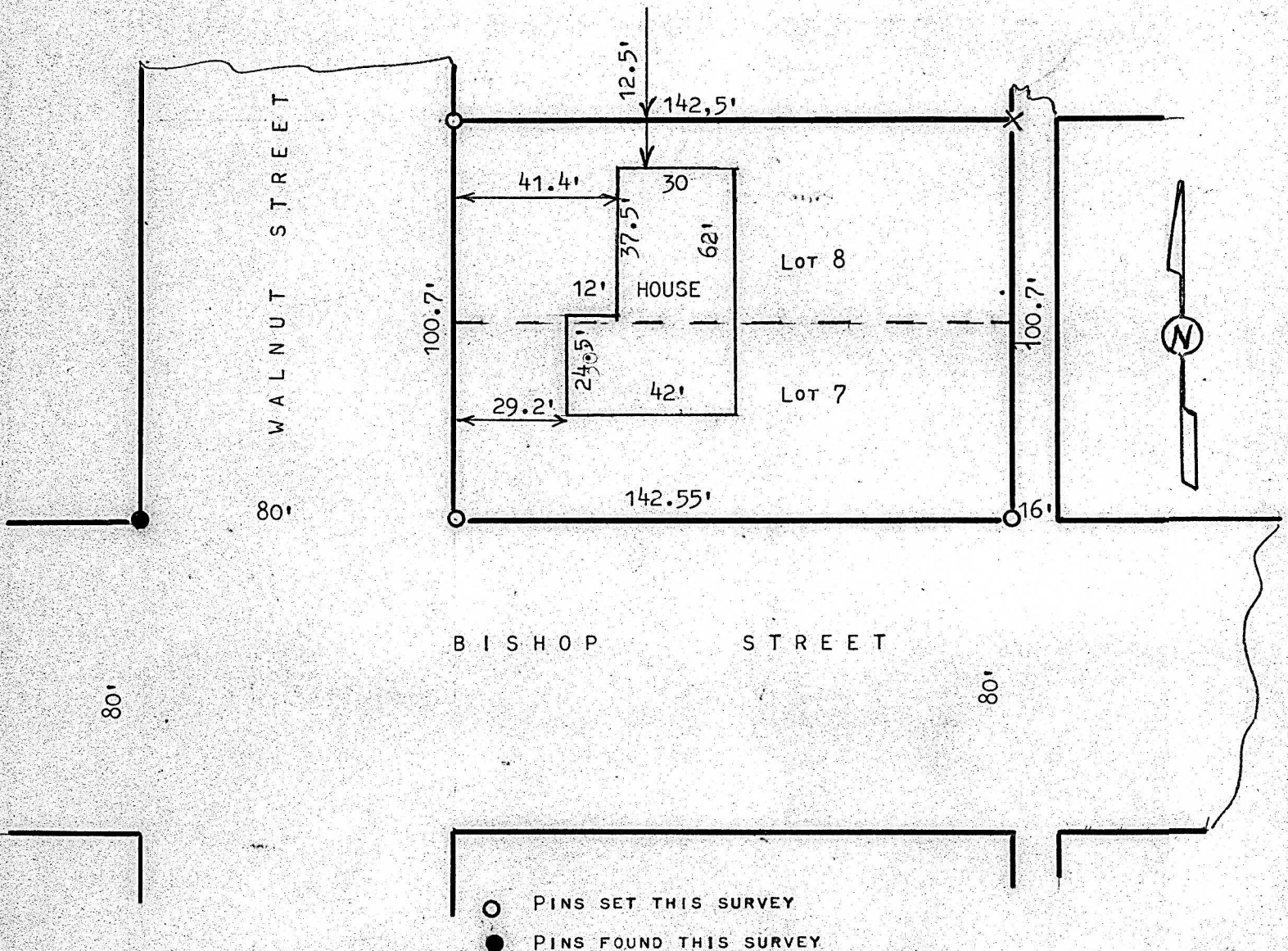


A SURVEY OF LOTS 7 & 8, BLOCK 113
ORIGINAL TOWN, MCPHERSON, KANSAS



STATE OF KANSAS)
MCPHERSON COUNTY) SS

I, MELVIN FERGUSON, PROFESSIONAL ENGINEER OF THE STATE OF KANSAS DO HEREBY CERTIFY THAT UNDER MY SUPERVISION A SURVEY WAS MADE TO DETERMINE THE LOCATION OF HOUSE ON LOTS 7 & 8, BLOCK 113, ORIGINAL TOWN, TO THE CITY OF MCPHERSON, KANSAS, AND THAT THE ABOVE PLAT IS A TRUE EXHIBIT OF SAID SURVEY AS FAR AS IT IS KNOWN TO ME.

SURVEY CALLED FOR BY MCPHERSON STATE BANK AND TRUST (CHARLES WILLIAMS)

SIGNED ON THIS 9th DAY OF SEPTEMBER 1980
MELVIN FERGUSON
PROFESSIONAL ENGINEER
MCPHERSON, KANSAS



NOTE: THIS SURVEY WAS BASED ON LEGAL SURVEY 115, TO BLOCK 113 O.T.S. OTHER POINTS FOUND NOT SHOWN ARE THE NE CORNER BLOCK 112, AND STONE FOUND AT THE SE CORNER OF BLOCK 114, O.T.S.