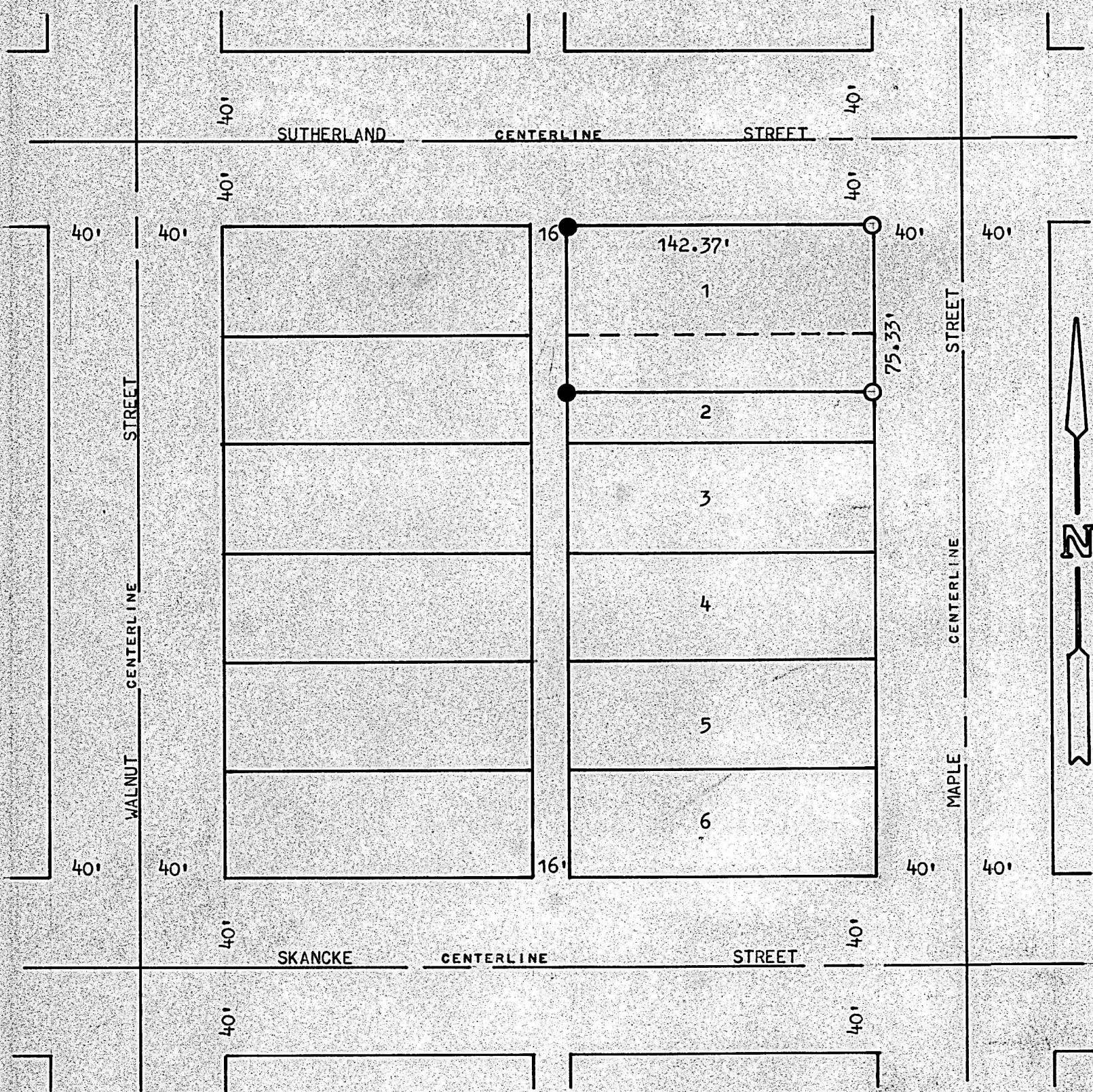


A SURVEY OF LOT 1 AND THE NORTH 1/2 OF LOT 2  
 BLOCK 104 ORIGINAL TOWN  
 MCPHERSON, KANSAS



- PINS FOUND THIS SURVEY  
 ● PINS SET THIS SURVEY

STATE OF KANSAS )  
 COUNTY OF MCPHERSON ) SS

I, FRANCIS RANKIN, COUNTY ENGINEER OF MCPHERSON COUNTY, KANSAS, DO HEREBY CERTIFY THAT UNDER MY SUPERVISION A SURVEY WAS MADE OF LOT 1 AND THE NORTH 1/2 OF LOT 2, BLOCK 104, ORIGINAL TOWN TO THE CITY OF MCPHERSON, KANSAS, AND THE ABOVE PLAT IS A TRUE EXHIBIT OF SAID SURVEY AS FAR AS IT IS KNOWN TO ME.

SURVEY CALLED FOR BY LARRY BOOKER.

SIGNED THIS 9 DAY OF AUGUST, 1971.

*F. R. Rankin*  
 F. R. RANKIN  
 COUNTY ENGINEER  
 MCPHERSON COUNTY, KANSAS

