



Garber Surveying Service, P.A.

2908 North Plum St.  
Hutchinson, Kansas 67502  
Phone 620 665-7032 • FAX 620 663-7401

511 North Poplar St.  
Newton, Kansas 67114  
Phone 316 283-5053 • FAX 316 283-5073

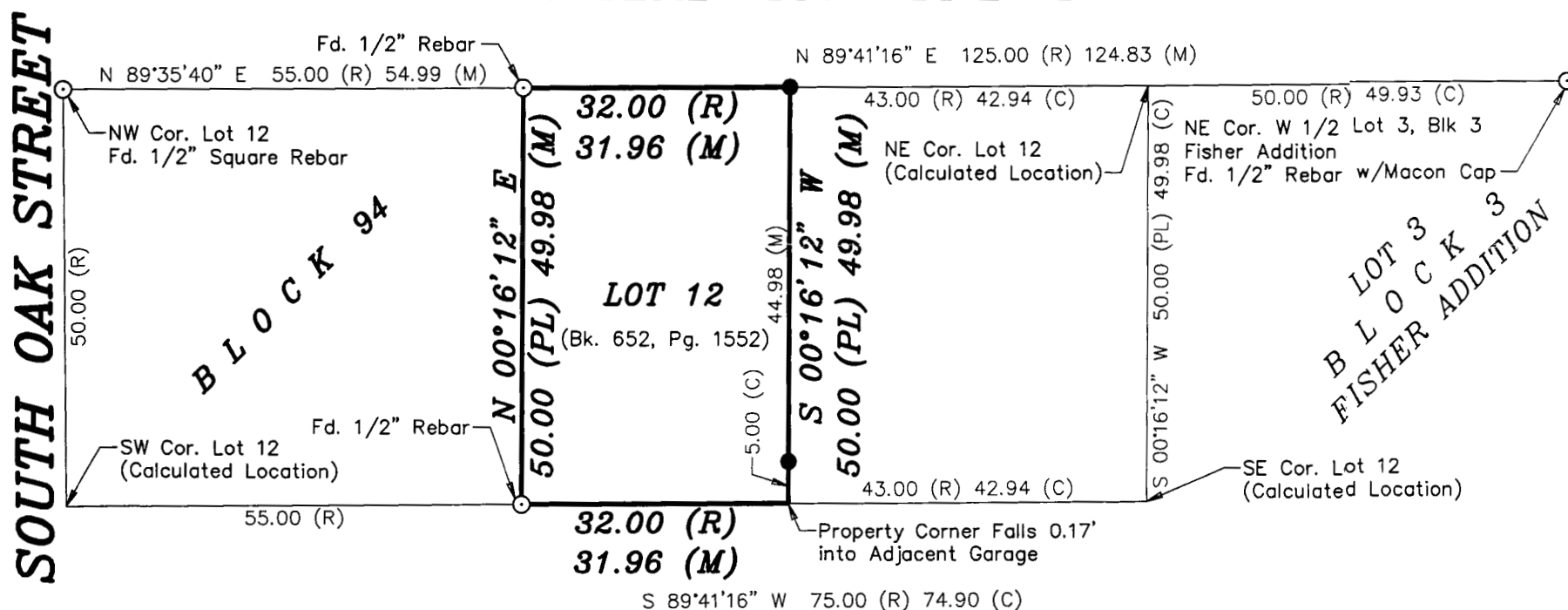
115 East Marlin  
McPherson, Kansas 67460  
Phone 620 241-4441 • FAX 620 241-4458

SURVEY FOR: SHEETS ADAMS REALTORS

Project No. G2016-481

DESCRIPTION: East 32 feet of the West 87 feet of Lot Twelve (12), Block Ninety-four (94), Original Town Site, McPherson, McPherson County, Kansas, according to the recorded plat thereof.

EAST ELIZABETH STREET



Scale: 1"=20'

BASIS OF BEARING = NAD 83 KANSAS SOUTH ZONE

LEGEND

- - Survey Monument Found
- - 5/8" x 24" Iron Rebar Set w/G.S.S. Cap
- (C) - Calculated
- (M) - Measured
- (PL) - Platted
- (R) - Record measurement

DATE OF FIELD WORK: September 8, 2016

SURVEYOR'S CERTIFICATE:

I hereby certify this plat to be a true, correct and complete representation of the property described above as surveyed under my supervision.

Dated: September 23, 2016

9/23/16  
  
Nicholas D. Schmidt LS #1492