

Block 101

B101  
Lot 1

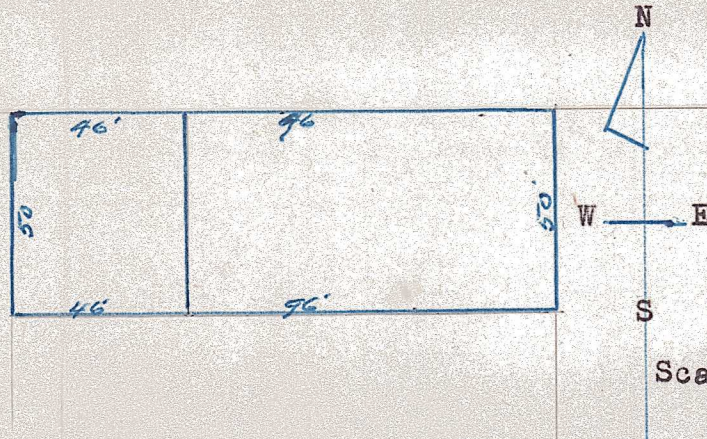
H. A. ROWLAND • Kansas Licensed Civil Engineer

Member

National Society Professional Engineers  
Kansas Society Professional Engineers  
Kansas Engineering Society

PHONE 796 X

McPHERSON, KANSAS



STATE OF KANSAS,  
McPherson County, ss.,

THIS IS TO CERTIFY, That, I have made a survey of a plot of ground and the above plat is in accordance therewith the same being Lot 1 in Block 101 of the Original town of McPherson, Kansas.  
The corners were marked by iron pins.  
Dated at McPherson, Kansas, Sep. 25th 1950.



Signed :- H. A. Rowland  
Licensed Professional Engineer.

MICROFILM