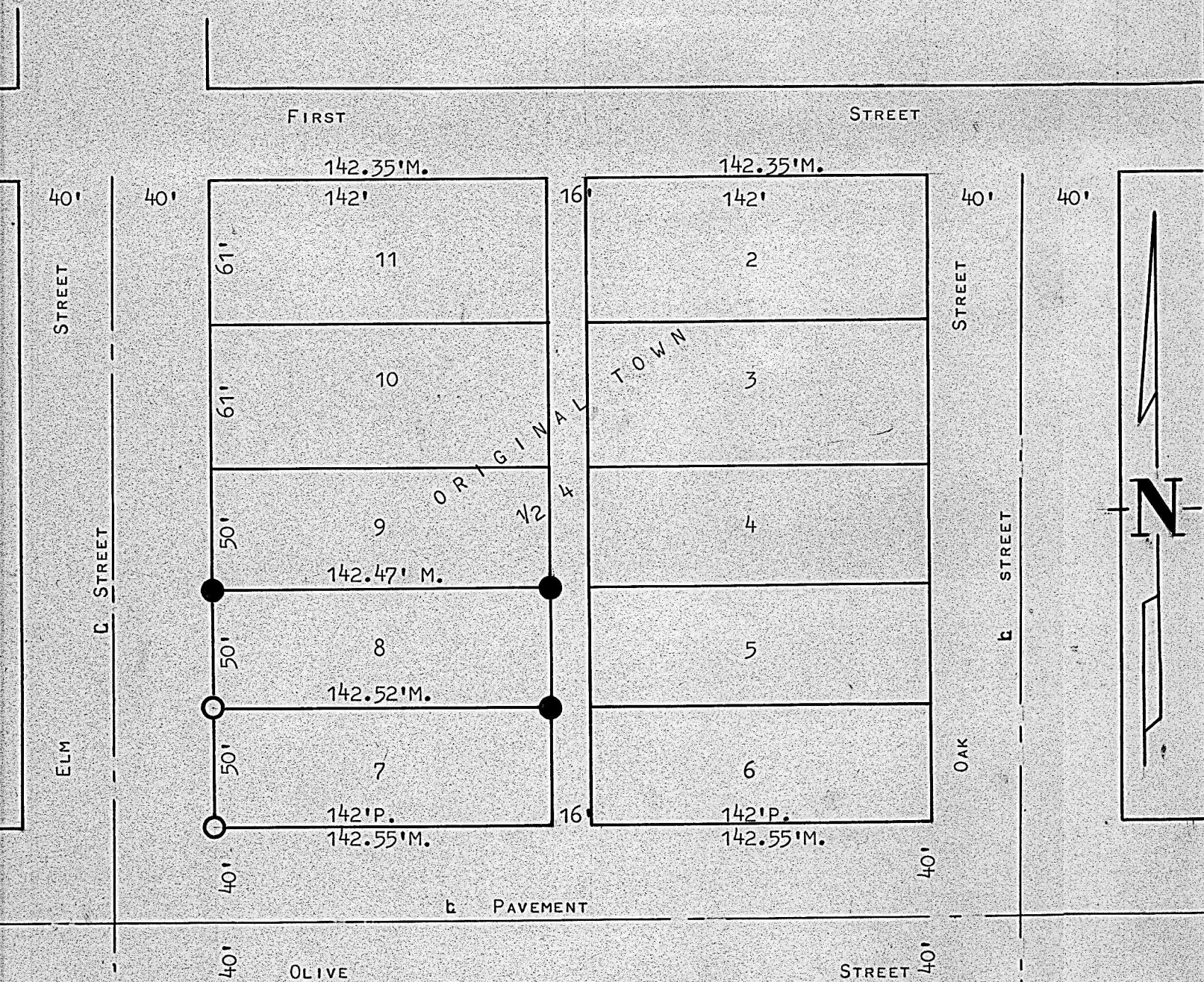


A SURVEY OF LOT 8,  
BLOCK 1/2 4 ORIGINAL TOWN  
MCPHERSON, KANSAS

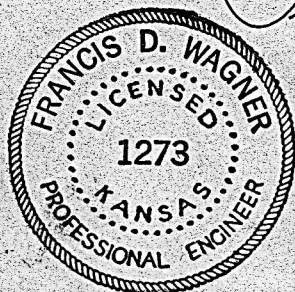


- PINS SET THIS SURVEY.
- PINS FOUND THIS SURVEY.

STATE OF KANSAS )  
COUNTY OF MCPHERSON ) SS

I, FRANCIS D. WAGNER, COUNTY ENGINEER OF MCPHERSON COUNTY, KANSAS, DO HEREBY CERTIFY THAT I DID CAUSE TO BE DONE ON THE 6TH DAY OF MAY, 1961 A SURVEY OF LOT 8 BLOCK 1/2 4 ORIGINAL TOWNSITE TO THE CITY OF MCPHERSON, KANSAS, AND THAT THE ACCOMPANYING PLAT IS A TRUE EXHIBIT OF SAID SURVEY.

MAY 9, 1961



*Francis D. Wagner*

FRANCIS D. WAGNER  
COUNTY ENGINEER  
MCPHERSON COUNTY