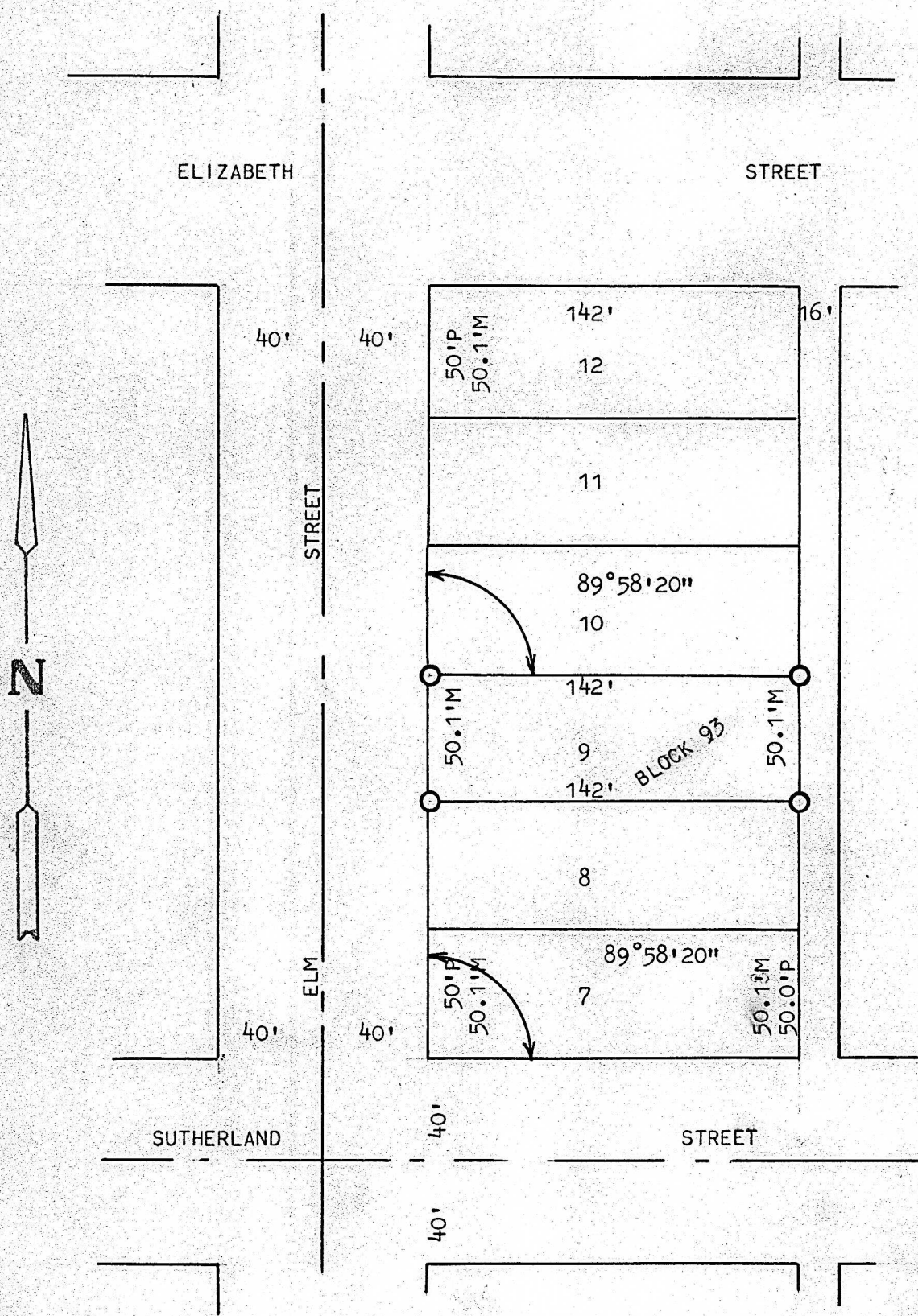


A SURVEY OF LOT 9, BLOCK 93  
ORIGINAL TOWN SITE, MCPHERSON  
KANSAS



O PINS SET THIS SURVEY

STATE OF KANSAS )  
COUNTY OF MCPHERSON ) SS

I, FRANCIS RANKIN, PROFESSIONAL ENGINEER OF THE STATE OF KANSAS, DO HEREBY CERTIFY THAT UNDER MY SUPERVISION A SURVEY WAS MADE OF LOT 9, BLOCK 93, ORIGINAL TOWN OF MCPHERSON, KANSAS, AND THAT THE ACCOMPANYING PLAT IS A TRUE EXHIBIT OF SAID SURVEY AS FAR AS IT IS KNOWN TO ME.  
SURVEY CALLED FOR BY MRS. ELIZABETH CLAYPOOL

SIGNED THIS 29 DAY OF APRIL, 1968

FRANCIS RANKIN  
PROFESSIONAL ENGINEER  
MCPHERSON, KANSAS



MICROFILM