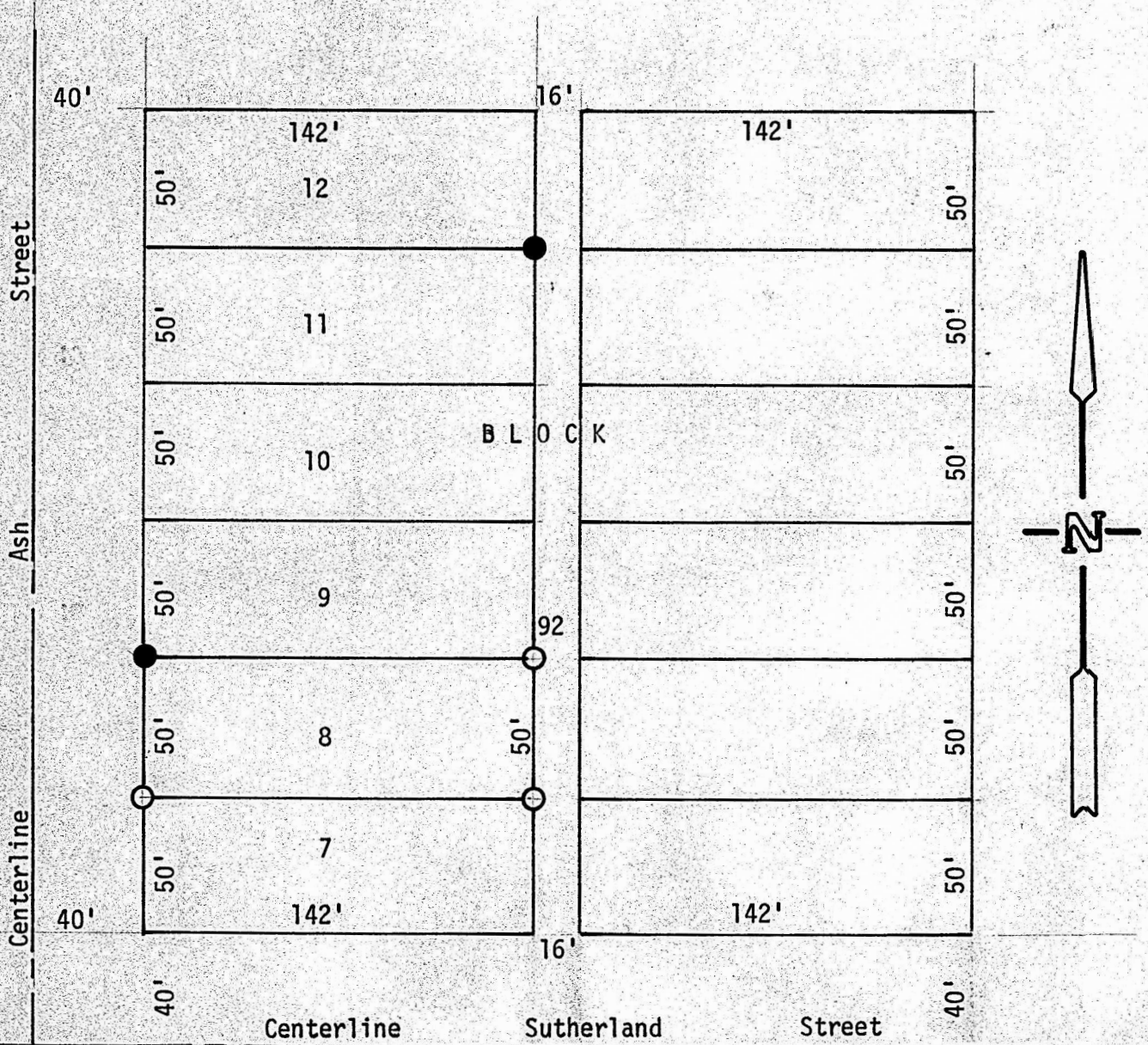


A SURVEY OF LOT 8  
BLOCK 92, ORIG. TOWN  
MC PHERSON, KANSAS



- Pins Found this Survey
- Pins Set this Survey

State of Kansas )  
County of McPherson ) SS

I, F. R. Rankin, County Engineer of McPherson County, Kansas, do hereby certify that under my supervision a survey was made of Lot 8, Block 92, Original Town to the City of McPherson, Kansas. The above plat is a true exhibit of said survey as far as it is known to me.

Survey called for by Howard Huber

Signed this 29 day of August, 1972

*F. R. Rankin*  
F. R. Rankin, P. E.  
County Engineer  
McPherson County, Kansas

