

Block 82

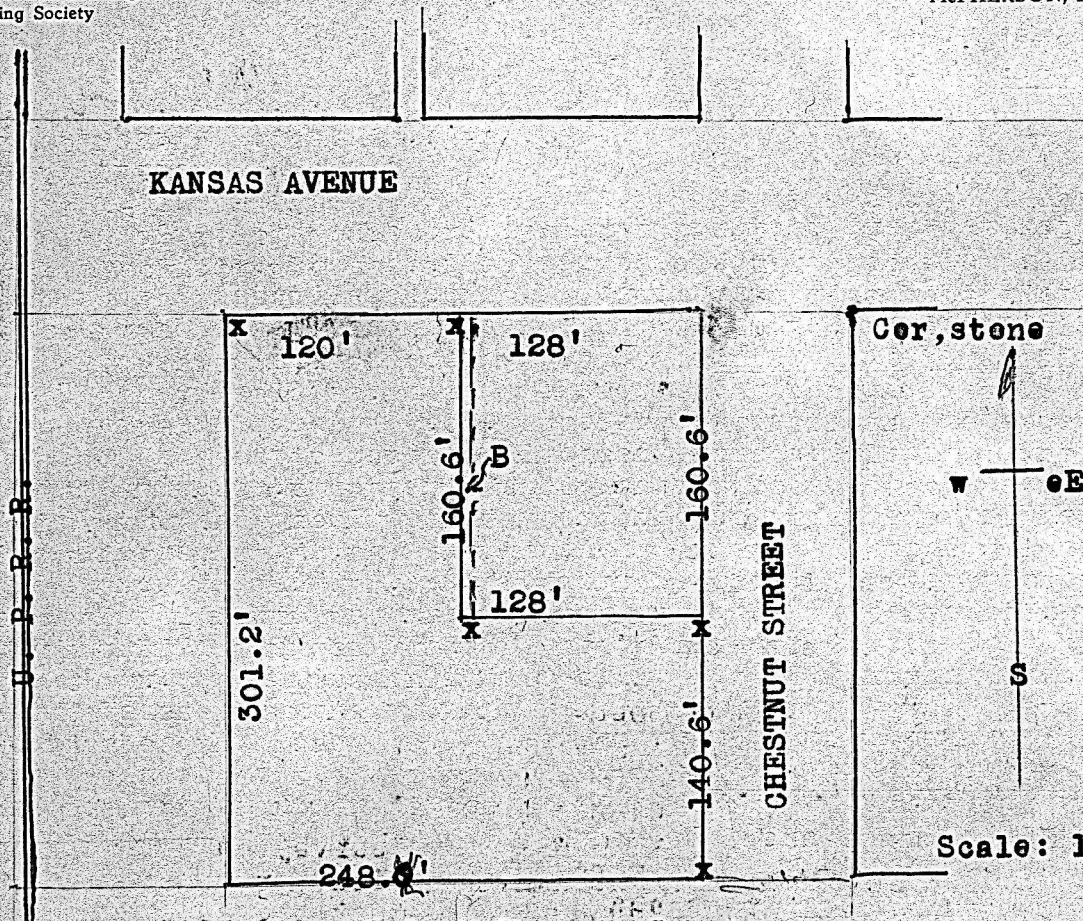
H. A. ROWLAND • Kansas Licensed Civil Engineer

Member

National Society Professional Engineers
Kansas Society Professional Engineers
Kansas Engineering Society

PHONE 796 X

McPHERSON, KANSAS



STATE OF KANSAS, McPherson County, ss.,

This is to certify, That, I have made a survey of a tract of land as shown above and that the same is in accordance therewith. Beginning at the Northwest corner of Railroad Addition to McPherson, Kansas; thence South 301.2 feet; thence East 248.8 feet to the Southeast corner of lot 6 in Block 82 of the Original Town of McPherson, Kansas; thence north 140.6' feet; thence West 128 feet; thence North 160.6 feet; thence West 120 feet to the place of beginning. The said tract consists of the south 40 feet of lot 4 and the lots 5 and 6 of said block 82 and all of Block 1 in said Railroad Addition except a tract 6 feet wide and 160.6 feet long designated on the above plat by a letter B. At the corners shown by an x I set iron pins to mark the spot.

Dated at McPherson, Kansas, Aug. 26th 1950.

Signed:- H. A. Rowland

Registered Professional Engineer.

PROFILM

