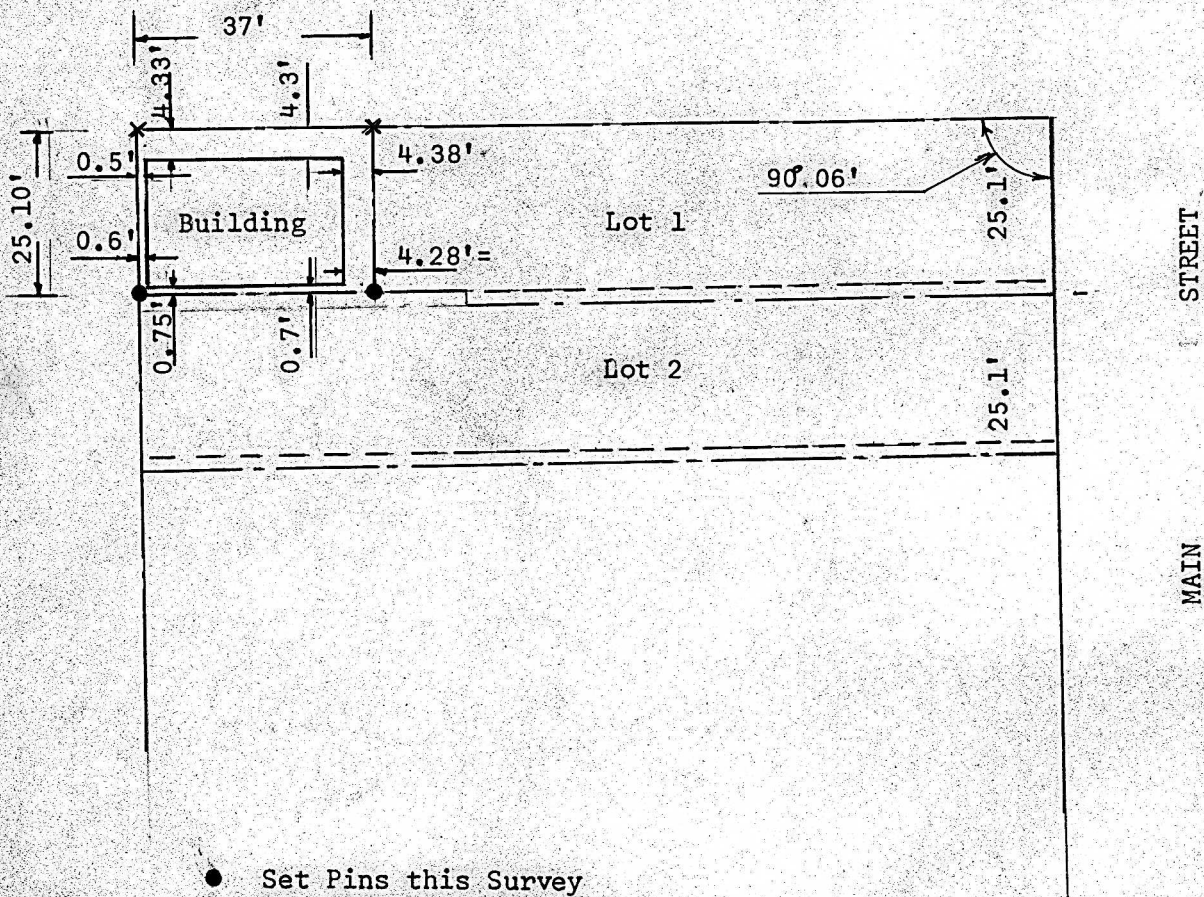


SURVEY IN LOT 1, BLOCK 79
ORIGINAL TOWN, MC PHERSON, KANSAS

KANSAS AVE.



State of Kansas)
County of McPherson) SS

I, Francis Rankin, County Engineer do hereby certify that under my supervision a survey was made of the West 37.0 feet; Lot #1, Block 79, Original Town of McPherson, Kansas and the above plat is a true exhibit of said survey as far as it is known to me.

Survey called for by Bob Perrin

Signed this 22 day of December, 1965

F. R. Rankin
F. R. Rankin
County Engineer
McPherson, Kansas

F. R. RANKIN
LICENSED
799
KANSAS
PROFESSIONAL ENGINEER