

Garber Surveying Service, P.A.



2908 North Plum St.
Hutchinson, Kansas 67502
Phone 620 665-7032 • FAX 620 663-7401

511 North Poplar St.
Newton, Kansas 67114
Phone 316 283-5053 • FAX 316 283-5073

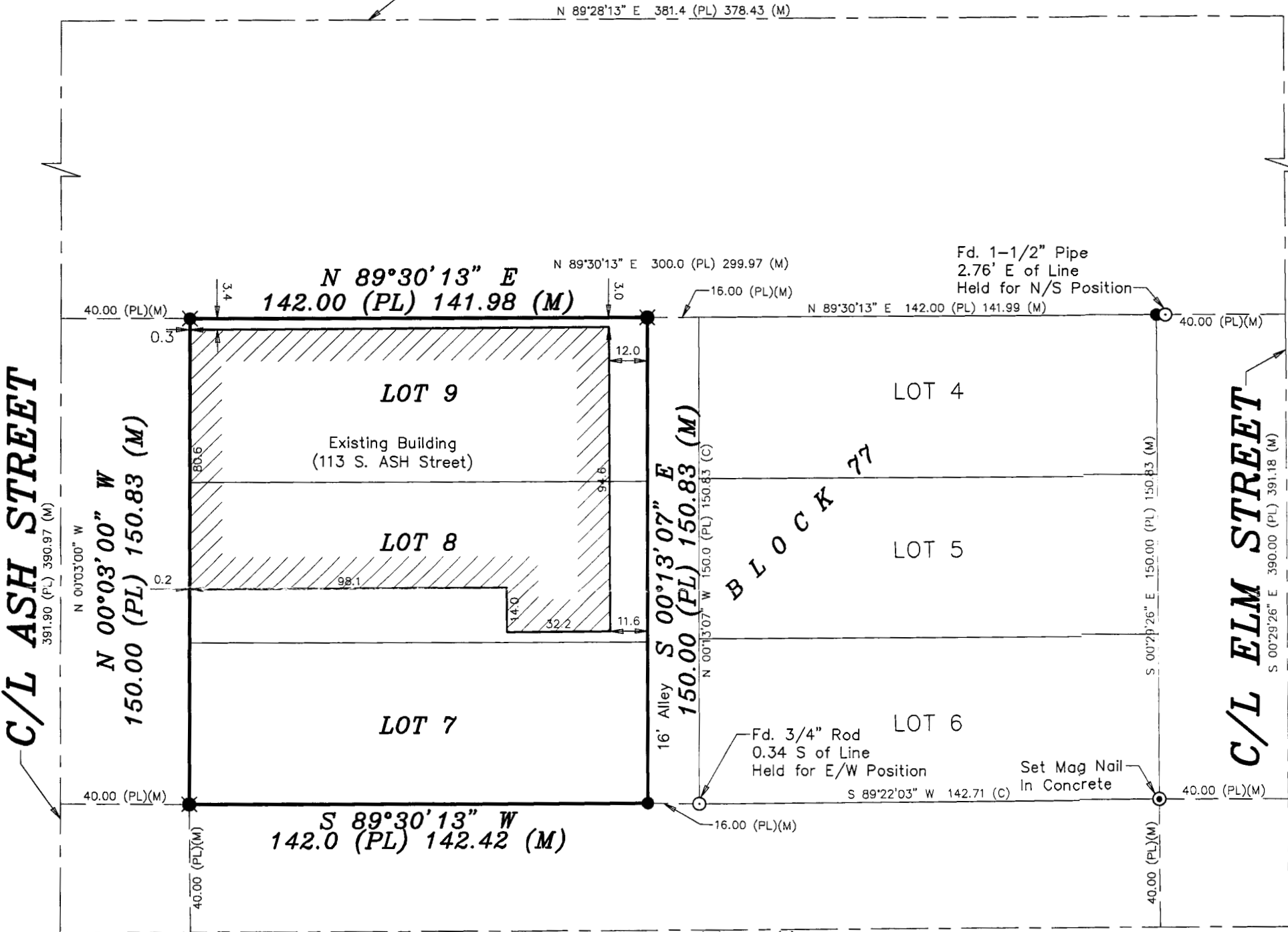
115 East Marlin
McPherson, Kansas 67460
Phone 620 241-4441 • FAX 620 241-4458

Project No. G2014-129

SURVEY FOR: JKC, LLC

DESCRIPTION OF RECORD: Lots 7, 8 and 9, Block 77, Original Townsite, City of McPherson.

C/L KANSAS AVENUE



C/L ELIZABETH AVENUE

NORTH

Scale: 1"=40'

BASIS OF BEARING = KANSAS STATE PLANE ZONE 1502

LEGEND

- - Survey Monument Found
- ⊕ - "+" Cut In Concrete Set
- - 5/8" x 24" Iron Rebar Set w/G.S.S. Cap
- (C) - Calculated
- (M) - Measured
- (PL) - Platted

DATE OF FIELD WORK: March 4, 2014

SURVEYOR'S CERTIFICATE:

I hereby certify this plat to be a true, correct and complete representation of the property described above as surveyed under my supervision.
Dated: March 12, 2014

Copyright © 2014 Garber Surveying Service, P.A.

Nicholas D. Schmidt LS #1492

