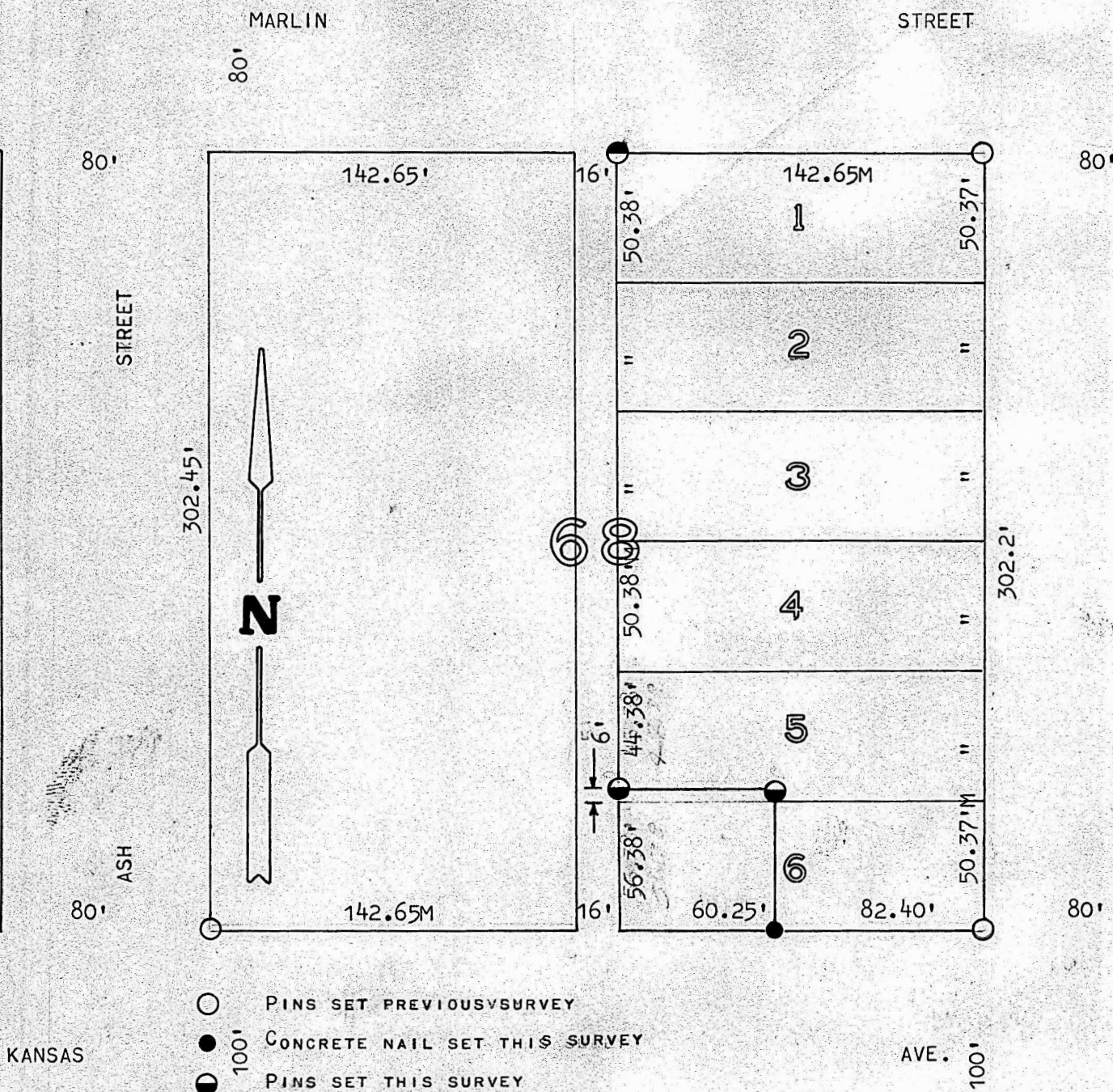


A SURVEY OF LOTS 1 THRU 5 AND PART OF LOT 6
BLOCK 68, ORIGINAL TOWN, MCPHERSON, KANSAS



STATE OF KANSAS)
COUNTY OF MCPHERSON) SS

I, FRANCIS RANKIN, COUNTY ENGINEER OF MCPHERSON, KANSAS DO HEREBY CERTIFY THAT UNDER MY SUPERVISION A SURVEY WAS MADE OF LOTS 1 THRU 5 AND PART OF LOT 6, BLOCK 68, ORIGINAL TOWNSSITE TO THE CITY OF MCPHERSON, KANSAS, AND THAT THE ABOVE PLAT IS A TRUE EXHIBIT OF SAID SURVEY AS FAR AS IT IS KNOWN TO ME.

SURVEY CALLED FOR BY MR. LATTIN (LUTHERN CHURCH)

SIGNED THIS 28 DAY OF MAY, 1968

FRANCIS RANKIN
COUNTY ENGINEER
MCPHERSON, KANSAS



MICROFILM