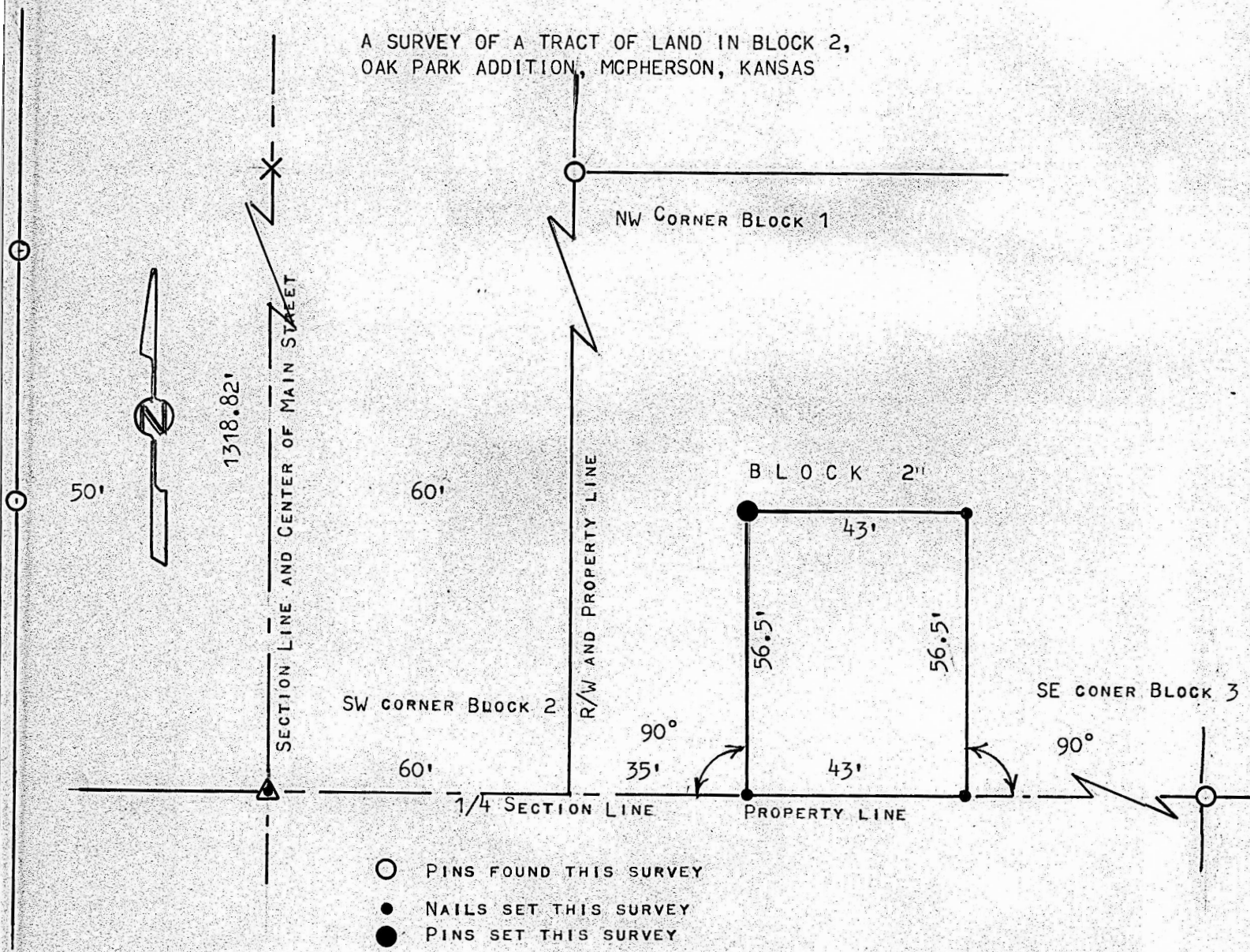


A SURVEY OF A TRACT OF LAND IN BLOCK 2,  
OAK PARK ADDITION, MCPHERSON, KANSAS



STATE OF KANSAS )  
COUNTY OF MCPHERSON ) SS

I, MELVIN FERGUSON, PROFESSIONAL ENGINEER OF THE STATE OF KANSAS  
DO HEREBY CERTIFY THAT UNDER MY SUPERVISION A SURVEY WAS MADE IN  
OAK PARK ADDITION, TO THE CITY OF MCPHERSON, KANSAS AND DESCRIBED  
AS FOLLOWS;

BEGINNING 35 FEET EAST ON THE SOUTH PROPERTY LINE FROM THE SW CORNER  
OF BLOCK 2, OAK PARK ADDITION, TO THE CITY OF MCPHERSON, KANSAS;;  
THENCE RIGHT ANGLE NORTH 56.5 FEET; THENCE EAST PARALLEL WITH SOUTH  
PROPERTY LINE 43 FEET; THENCE SOUTH 56.5 FEET; THENCE WEST 43 FEET  
TO PLACE OF BEGINNING, AND THAT THE ABOVE PLAT IS A TRUE EXHIBIT OF  
SAID SURVEY AS FAR AS IT IS KNOWN TO ME.

SURVEY CALLED FOR BY V. DEWITT (MCPHERSON STATE BANK AND TRUST)

SIGNED THIS

27<sup>th</sup>

Melvin Ferguson  
MELVIN FERGUSON

PROFESSIONAL ENGINEER  
MCPHERSON, KANSAS

