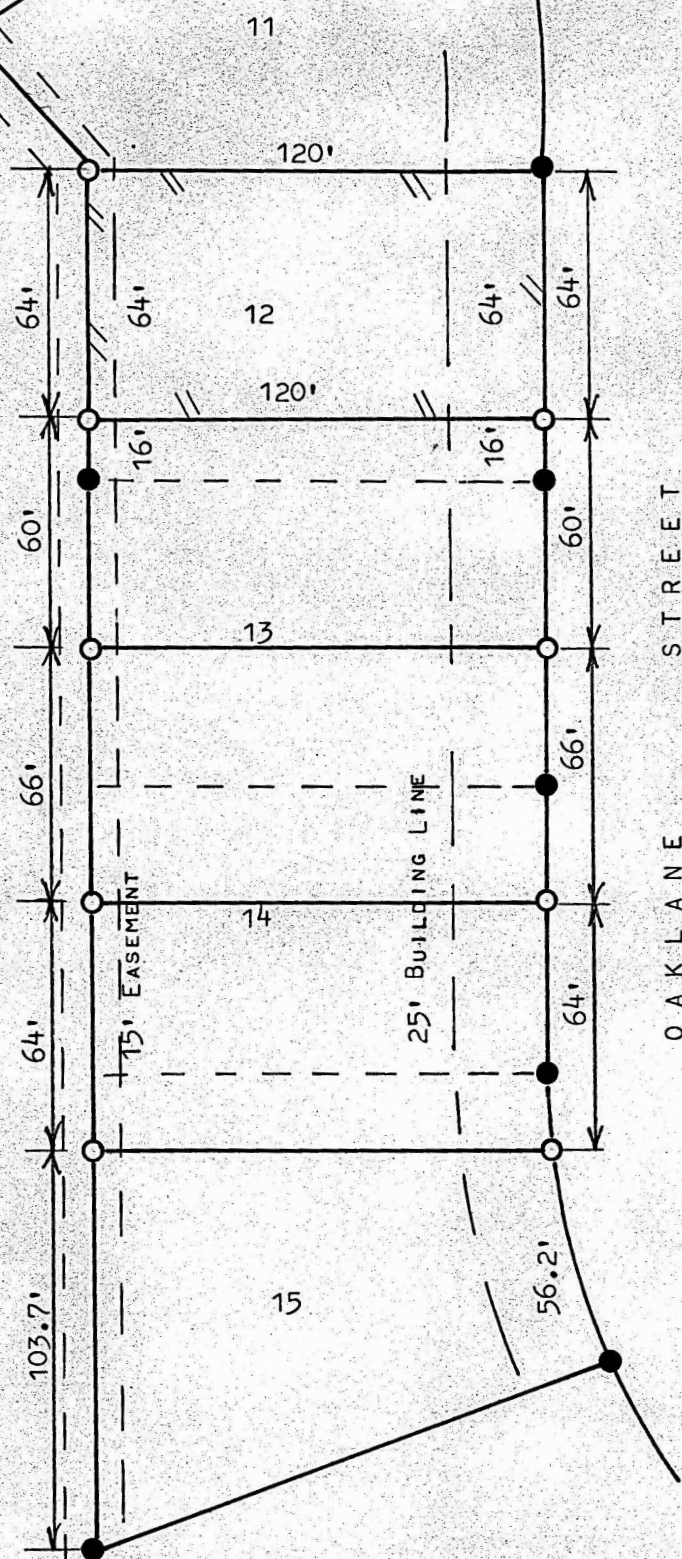


A SURVEY IN BLOCK 7
OAK PARK ADDITION
MCIPHERSON, KANSAS

● PINS FOUND THIS SURVEY
○ PINS SET THIS SURVEY

357.7M



STATE OF KANSAS)
COUNTY OF MCIPHERSON) SS

I, MELVIN FERGUSON, PROFESSIONAL ENGINEER OF THE STATE OF KANSAS DO HEREBY CERTIFY THAT UNDER MY SUPERVISION A SURVEY WAS MADE OF LOT 12, EXCEPT THE SOUTH 16 FEET, BLOCK 7, OAK PARK ADDITION TO THE CITY OF MCIPHERSON, KANSAS, AND THAT THE ACCOMPANYING PLAT IS A TRUE EXHIBIT OF SAID SURVEY AS FAR AS IT IS KNOWN TO ME. SURVEY CALLED FOR BY STEWART & EDIGER CONST.

SIGNED THIS 26th DAY OF APRIL, 1976

Melvin Ferguson
MELVIN FERGUSON
PROFESSIONAL ENGINEER
MCIPHERSON, KANSAS



MICROFILM