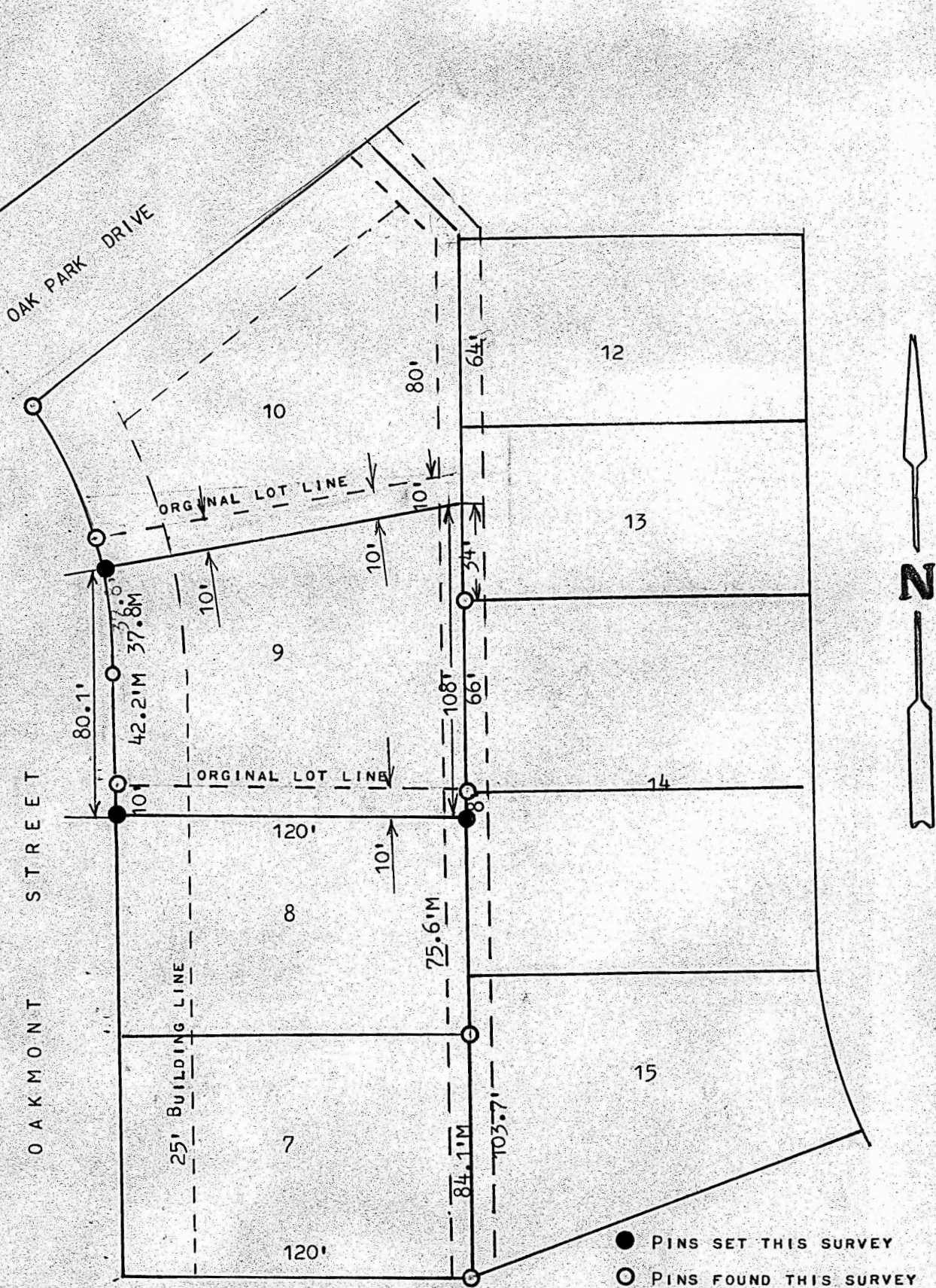


A SURVEY IN BLOCK 7, OAK PARK  
MCPHERSON, KANSAS



STATE OF KANSAS )  
COUNTY OF MCPHERSON ) SS

I, MELVIN FERGUSON, PROFESSIONAL ENGINEER OF THE STATE OF KANSAS DO HEREBY CERTIFY THAT UNDER MY SUPERVISION A SURVEY WAS MADE OF THE NORTH 10 FEET OF LOT 8, AND LOT 9 EXCEPT THE NORTH 10 FEET, BLOCK 7, OAK PARK ADDITION TO THE CITY OF MCPHERSON, KANSAS, AND THAT THE ACCOMPANYING PLAT IS A TRUE EXHIBIT OF SAID SURVEY AS FAR AS IT IS KNOWN TO ME.

SURVEY CALLED FOR BY VERLE JOHNSON

SIGNED THIS 22<sup>nd</sup> DAY OF DECEMBER, 1976

MELVIN FERGUSON  
PROFESSIONAL ENGINEER  
MCPHERSON, KANSAS

