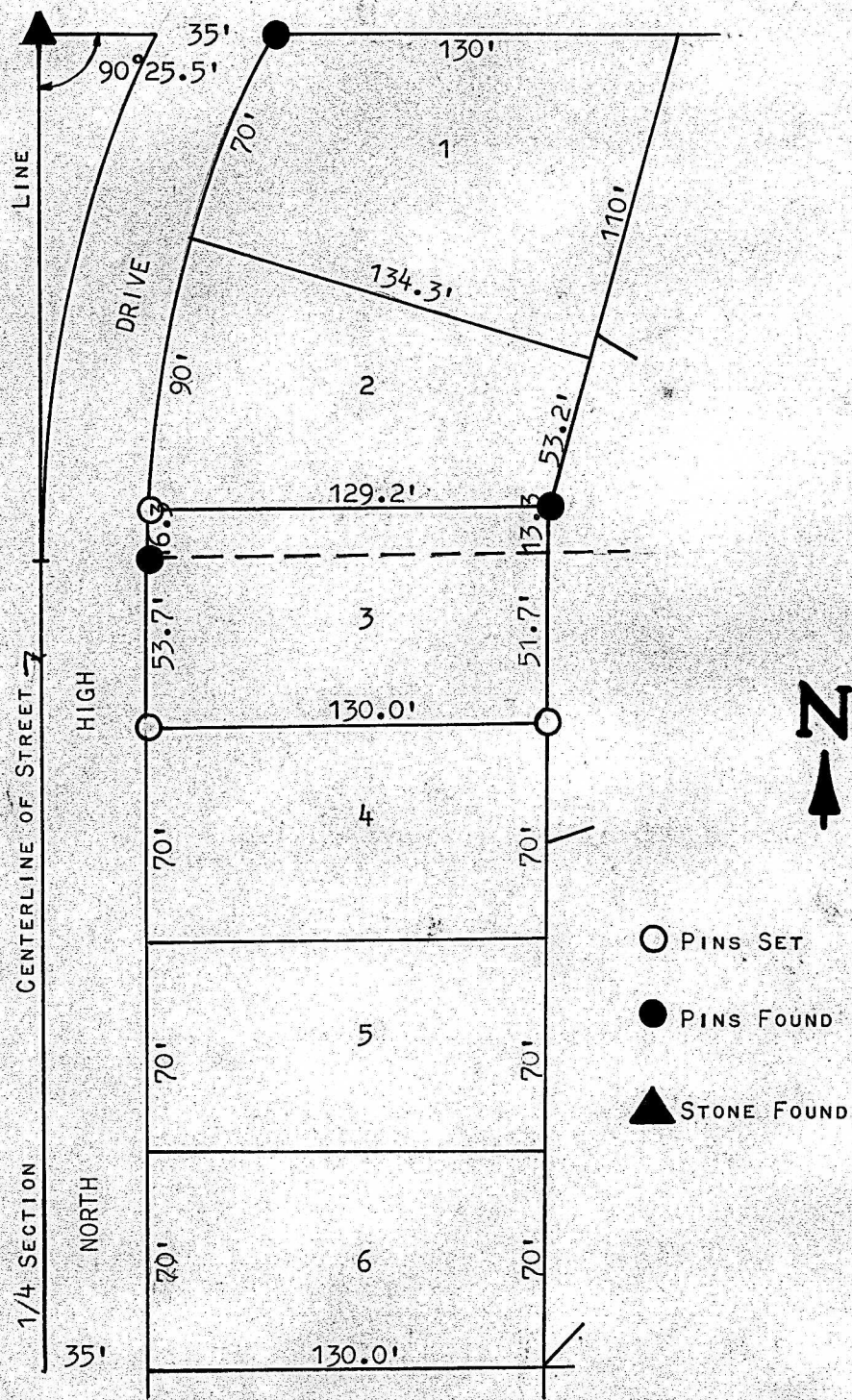


A SURVEY OF LOT 3, BLOCK 2
NORTH HIGH ADDITION TO THE
CITY OF McPHERSON, KANSAS



STATE OF KANSAS)
COUNTY OF McPHERSON) ss

I, F. R. RANKIN, COUNTY ENGINEER OF McPHERSON COUNTY, KANSAS, DO
HEREBY CERTIFY, THAT THE SURVEY WAS MADE UNDER MY SUPERVISION OF
LOT 3, BLOCK 2, NORTH HIGH ADDITION TO THE CITY OF McPHERSON AND
THE ABOVE PLAT IS A TRUE EXHIBIT OF SAID SURVEY AS FAR AS IT IS
KNOWN TO ME.

SURVEY CALLED FOR BY HARRIS LUMBER CO.

SIGNED THIS 17 DAY OF NOVEMBER

F. R. Rankin
F. R. RANKIN
COUNTY ENGINEER



MICROFILM