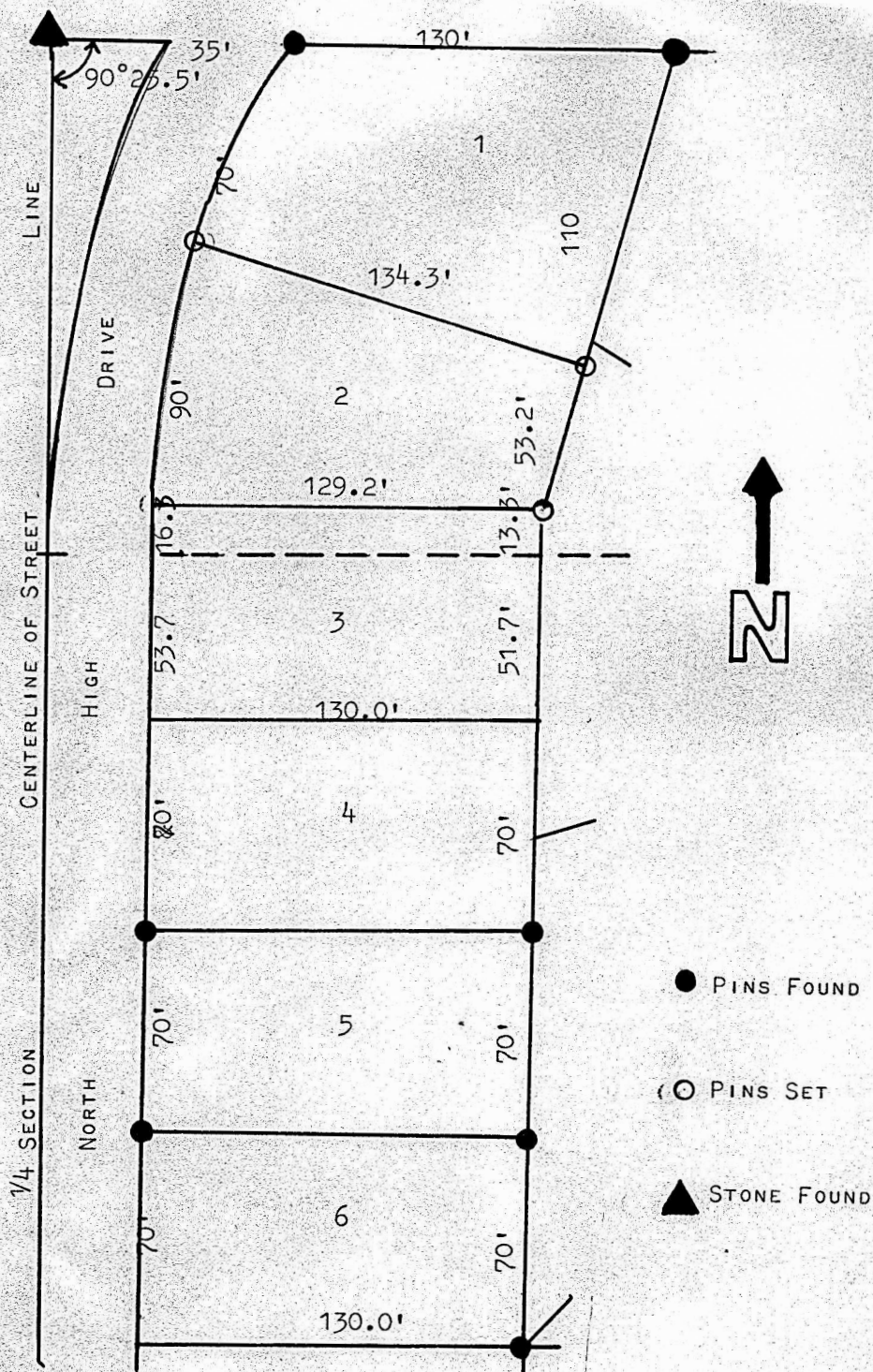


A SURVEY OF LOT 1, BLOCK 2
NORTH HIGH ADDITION TO THE
CITY OF McPHERSON, KANSAS



STATE OF KANSAS
COUNTY OF McPHERSON } ss

I, F.R. RANKIN, COUNTY ENGINEER OF McPHERSON COUNTY, KANSAS, DO HEREBY CERTIFY, THAT THE SURVEY WAS MADE UNDER MY SUPERVISION OF LOT 1, BLOCK 2 NORTH HIGH ADDITION TO THE CITY OF McPHERSON AND THE ABOVE PLAT IS A TRUE EXHIBIT OF SAID SURVEY AS FAR AS IT IS KNOWN TO ME.

SURVEY CALLED FOR BY BOB PERRIN

SIGNED THIS 1 DAY OF AUGUST, 1967

F.R. Rankin
F.R. RANKIN
COUNTY ENGINEER



MICROFILM