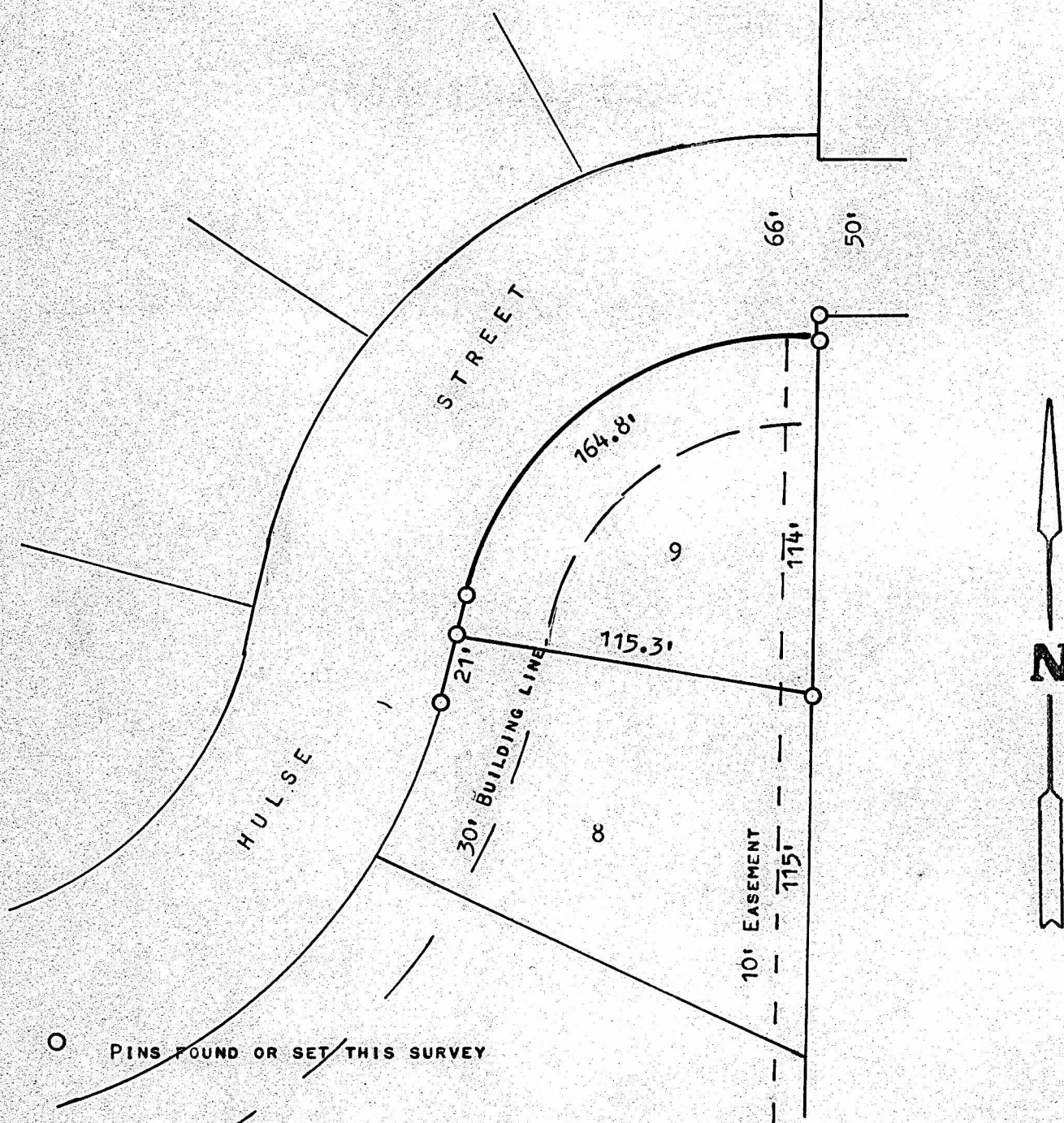


A SURVEY OF LOT 9, BLOCK 8
NORTH HIGH ADDITION, MCPHERSON, KANSAS



STATE OF KANSAS)
COUNTY OF MCPHERSON) SS

I, MELVIN FERGUSON, PROFESSIONAL ENGINEER OF THE STATE OF KANSAS
DO HEREBY CERTIFY THAT UNDER MY SUPERVISION A SURVEY WAS MADE OF
LOT 9, BLOCK 8, NORTH HIGH ADDITION, TO THE CITY OF MCPHERSON,
KANSAS AND THAT THE ABOVE PLAT IS A TRUE EXHIBIT OF SAID SURVEY
AS FAR AS IT IS KNOWN TO ME.

SURVEY CALLED FOR BY LARRY MARGREITER

SIGNED THIS 29th DAY OF OCTOBER, 1974

Melvin Ferguson
MELVIN FERGUSON
PROFESSIONAL ENGINEER
MCPHERSON, KANSAS



MICROFILM