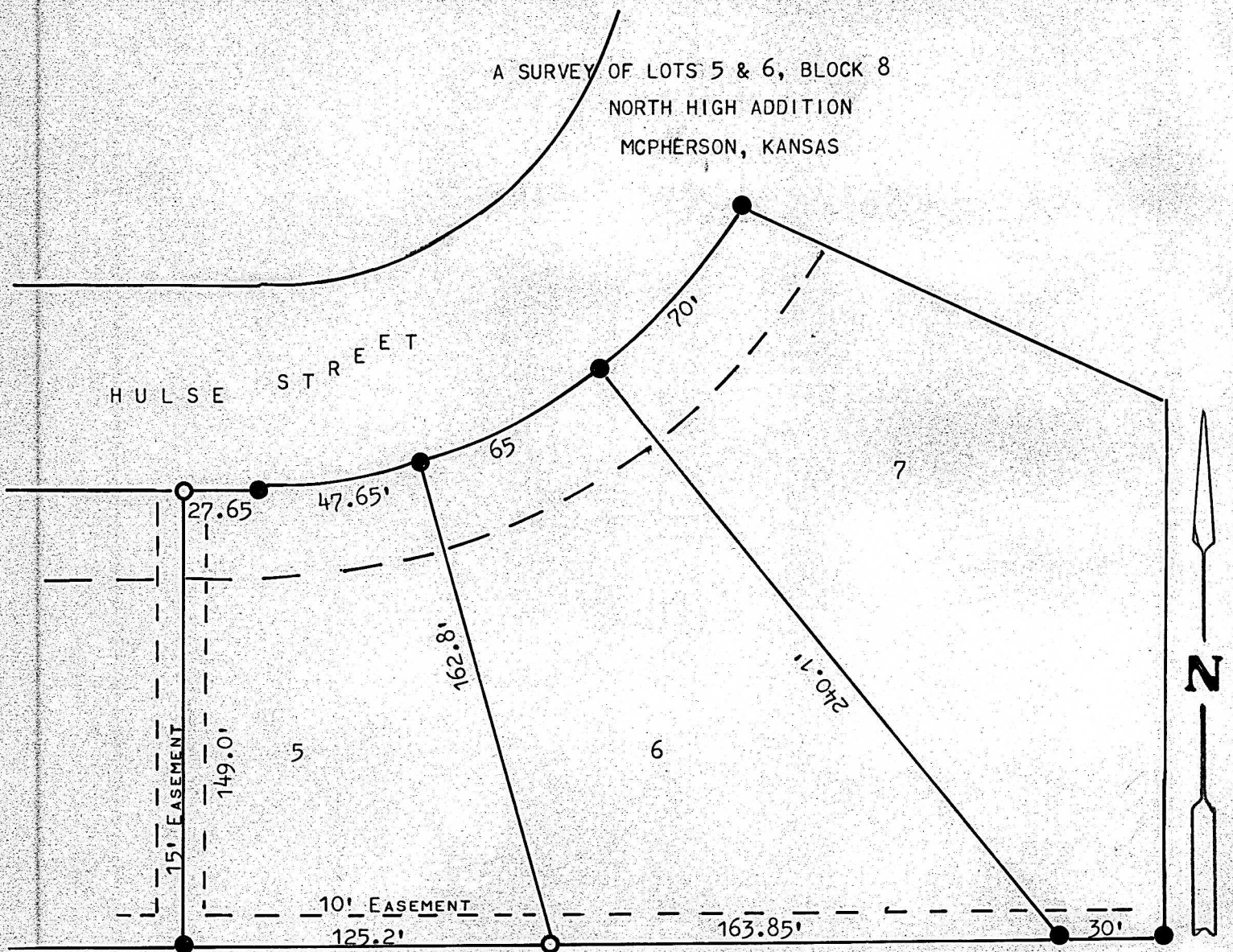


A SURVEY OF LOTS 5 & 6, BLOCK 8
NORTH HIGH ADDITION
MCIPHERSON, KANSAS



● PINS FOUND THIS SURVEY

○ PINS SET THIS SURVEY

STATE OF KANSAS)
COUNTY OF MCIPHERSON) SS

I, MELVIN FERGUSON, PROFESSIONAL ENGINEER OF THE STATE OF KANSAS
DO HEREBY CERTIFY THAT UNDER MY SUPERVISION A SURVEY WAS MADE OF
LOTS 5 AND 6, BLOCK 8, NORTH HIGH ADDITION TO THE CITY OF MCIPHERSON,
KANSAS, AND THAT THE ABOVE PLAT IS A TRUE EXHIBIT OF SAID SURVEY AS
FAR AS IT IS KNOWN TO ME.

SURVEY CALLED FOR BY HAROLD SCHLENDER

SIGNED THIS 25th DAY OF AUGUST, 1975

Melvin Ferguson
MELVIN FERGUSON
PROFESSIONAL ENGINEER
MCIPHERSON, KANSAS



MICROFILM