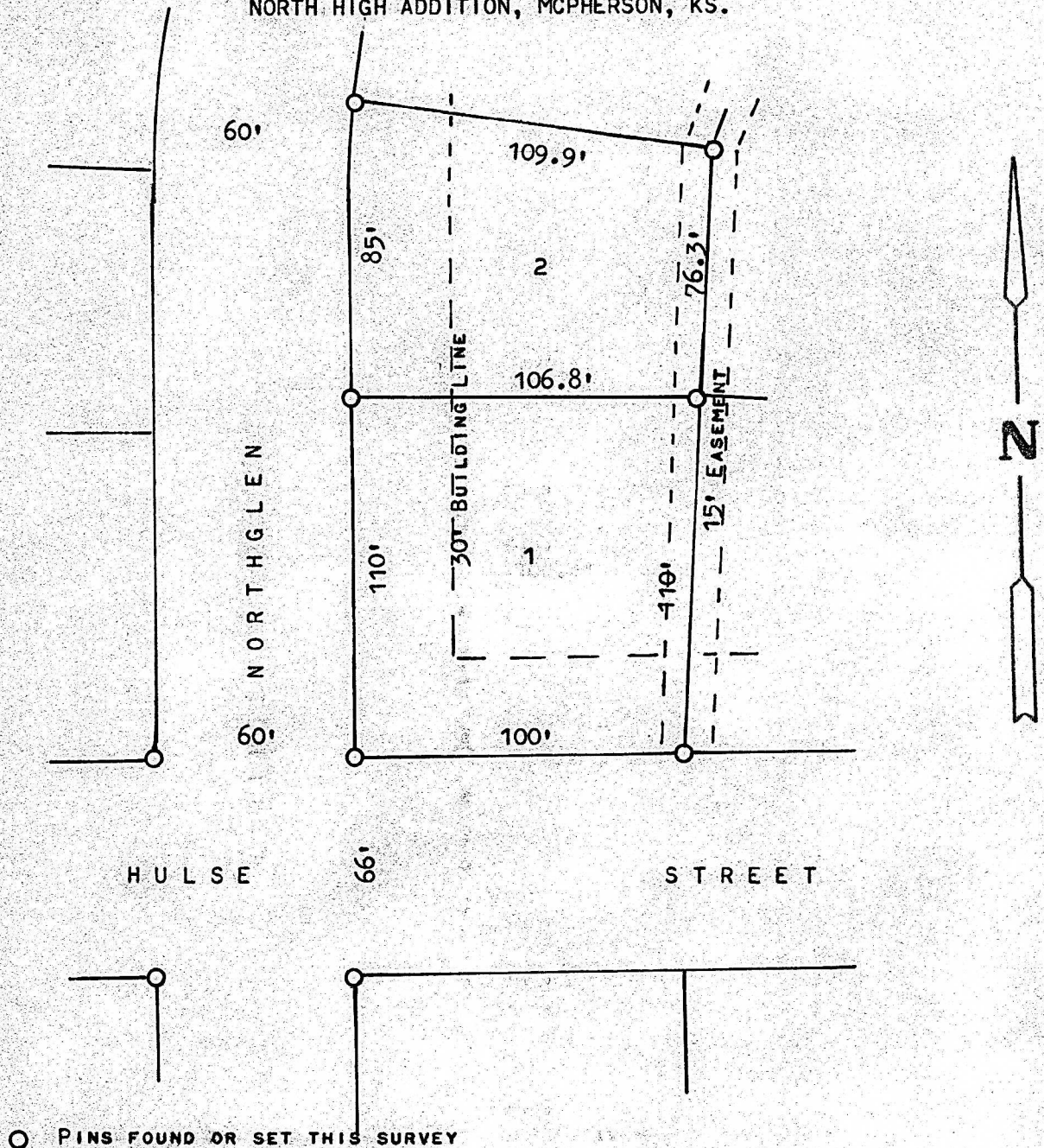


A SURVEY OF LOTS 1 & 2, BLOCK 7  
NORTH HIGH ADDITION, MCPHERSON, KS.



STATE OF KANSAS )  
COUNTY OF MCPHERSON ) SS

I, MELVIN FERGUSON, PROFESSIONAL ENGINEER OF THE STATE OF KANSAS DO HEREBY CERTIFY THAT UNDER MY SUPERVISION A SURVEY WAS MADE OF LOTS 1 AND 2, BLOCK 7, NORTH HIGH ADDITION, TO THE CITY OF MCPHERSON, KANSAS, AND THAT THE ABOVE PLAT IS A TRUE EXHIBIT OF SAID SURVEY AS FAR AS IT IS KNOWN TO ME.

SURVEY CALLED FOR BY BOWERS BUILDER & DEVEL.

SIGNED THIS 19<sup>th</sup> DAY OF SEPTEMBER, 1974

*Melvin Ferguson*  
MELVIN FERGUSON  
PROFESSIONAL ENGINEER  
MCPHERSON, KANSAS

