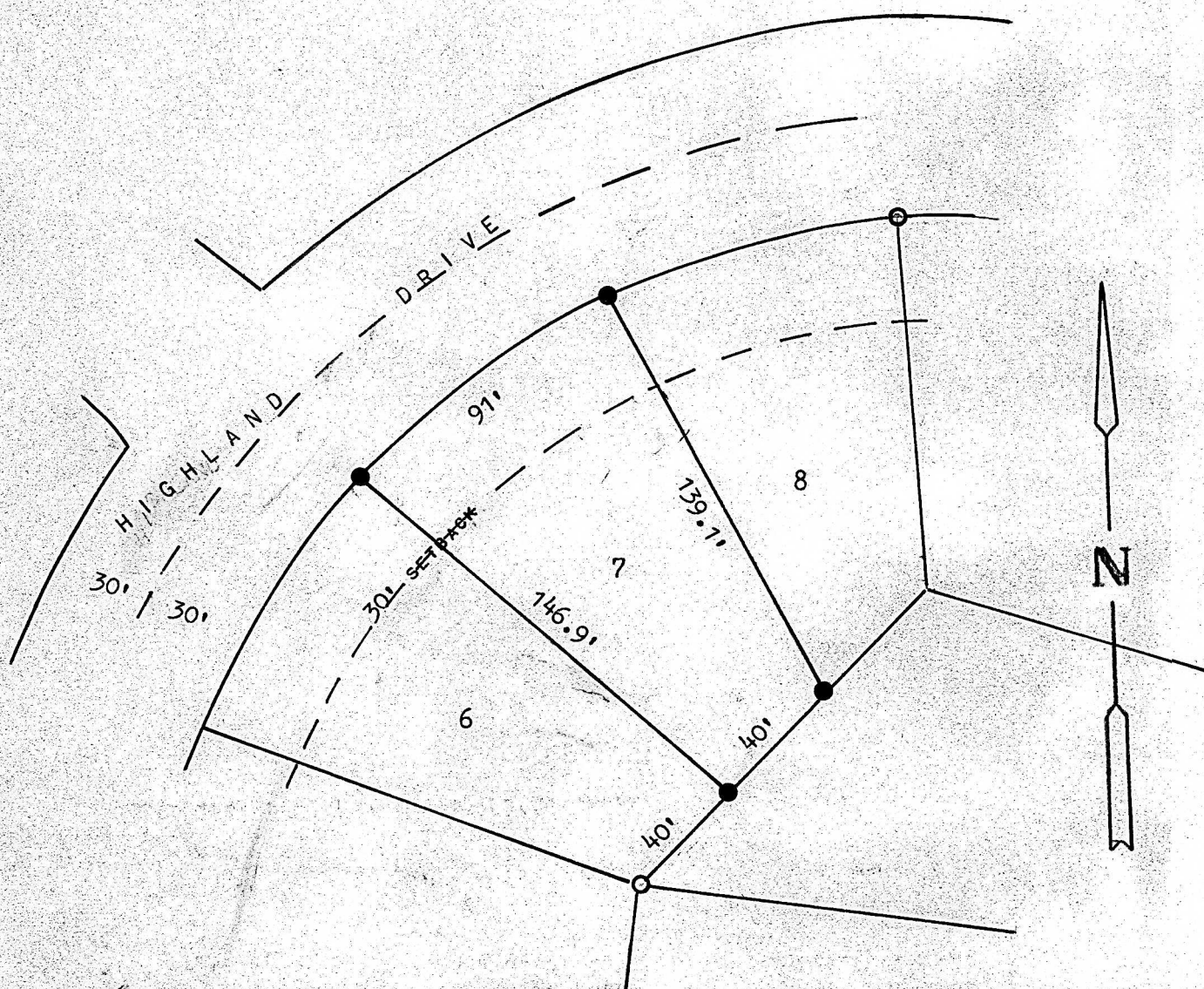


A SURVEY OF LOT 7, BLOCK 5, NORTH HIGH ADDITION

MCPHERSON, KANSAS



● PINS FOUND OR SET THIS SURVEY

STATE OF KANSAS )  
COUNTY OF MCPHERSON ) SS

I, FRANCIS RANKIN, PROFESSIONAL ENGINEER OF THE STATE OF KANSAS  
DO HEREBY CERTIFY THAT UNDER MY SUPERVISION A SURVEY WAS MADE OF  
LOT 7, BLOCK 5, NORTH HIGH ADDITION, TO THE CITY OF MCPHERSON,  
KANSAS, AND THAT THE ABOVE PLAT IS A TRUE EXHIBIT OF SAID SURVEY  
AS FAR AS IT IS KNOWN TO ME.

SURVEY CALLED FOR BY DON HOCK

SIGNED THIS 30 DAY OF OCTOBER, 1973

*Francis Rankin*  
FRANCIS RANKIN  
PROFESSIONAL ENGINEER  
MCPHERSON, KANSAS



MICROFILM