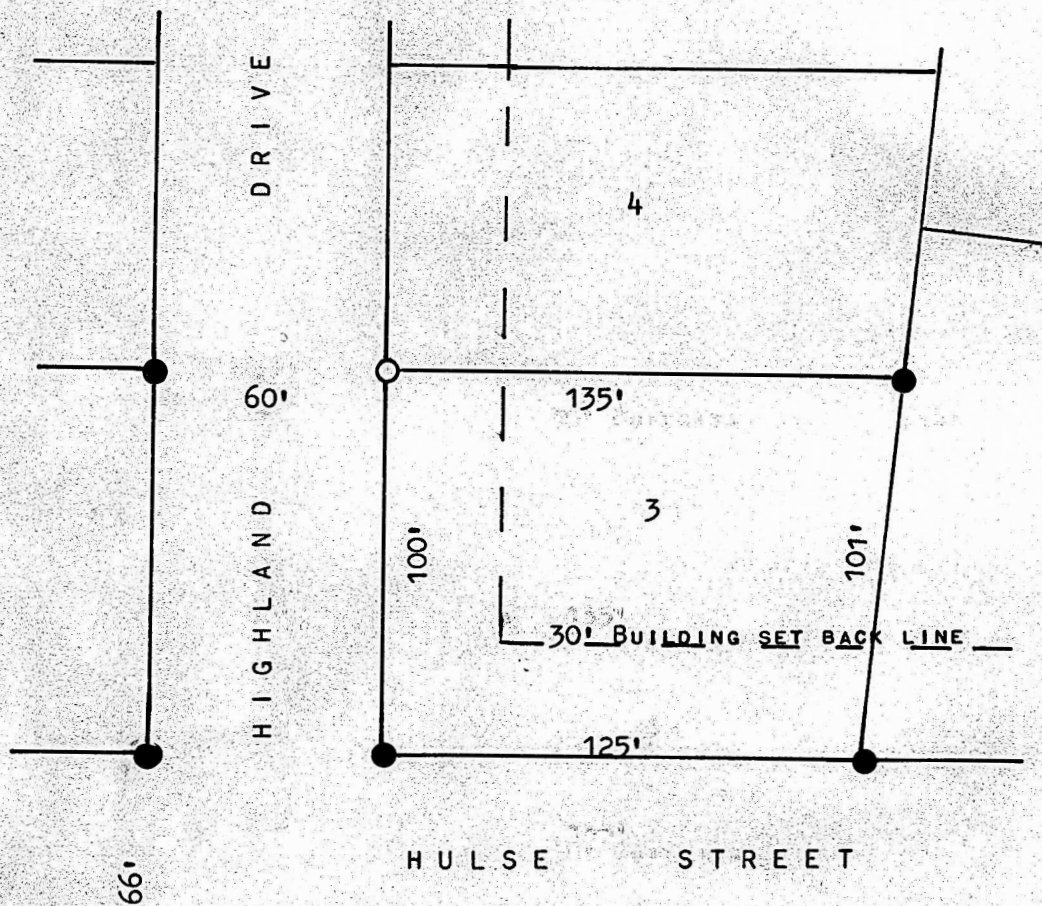


A SURVEY OF LOT 3, BLOCK 5, NORTH HIGH ADDITION
MCPHERSON, KANSAS



- PINS FOUND THIS SURVEY
- PINS SET THIS SURVEY

STATE OF KANSAS)
COUNTY OF MCPHERSON) SS

I, FRANCIS RANKIN, PROFESSIONAL ENGINEER OF THE STATE OF KANSAS DO HEREBY CERTIFY THAT UNDER MY SUPERVISION A SURVEY WAS MADE OF LOT 3, BLOCK 5, NORTH HIGH ADDITION, TO THE CITY OF MCPHERSON, KANSAS, AND THAT THE ABOVE PLAT IS A TRUE AND CORRECT PLAT AS FAR AS IT IS KNOWN TO ME.

SURVEY CALLED FOR BY DEAN STEWART

SIGNED THIS 8 DAY OF AUGUST, 1973

Francis Rankin
FRANCIS RANKIN
PROFESSIONAL ENGINEER
MCPHERSON, KANSAS
799
KANSAS
PROFESSIONAL ENGINEER