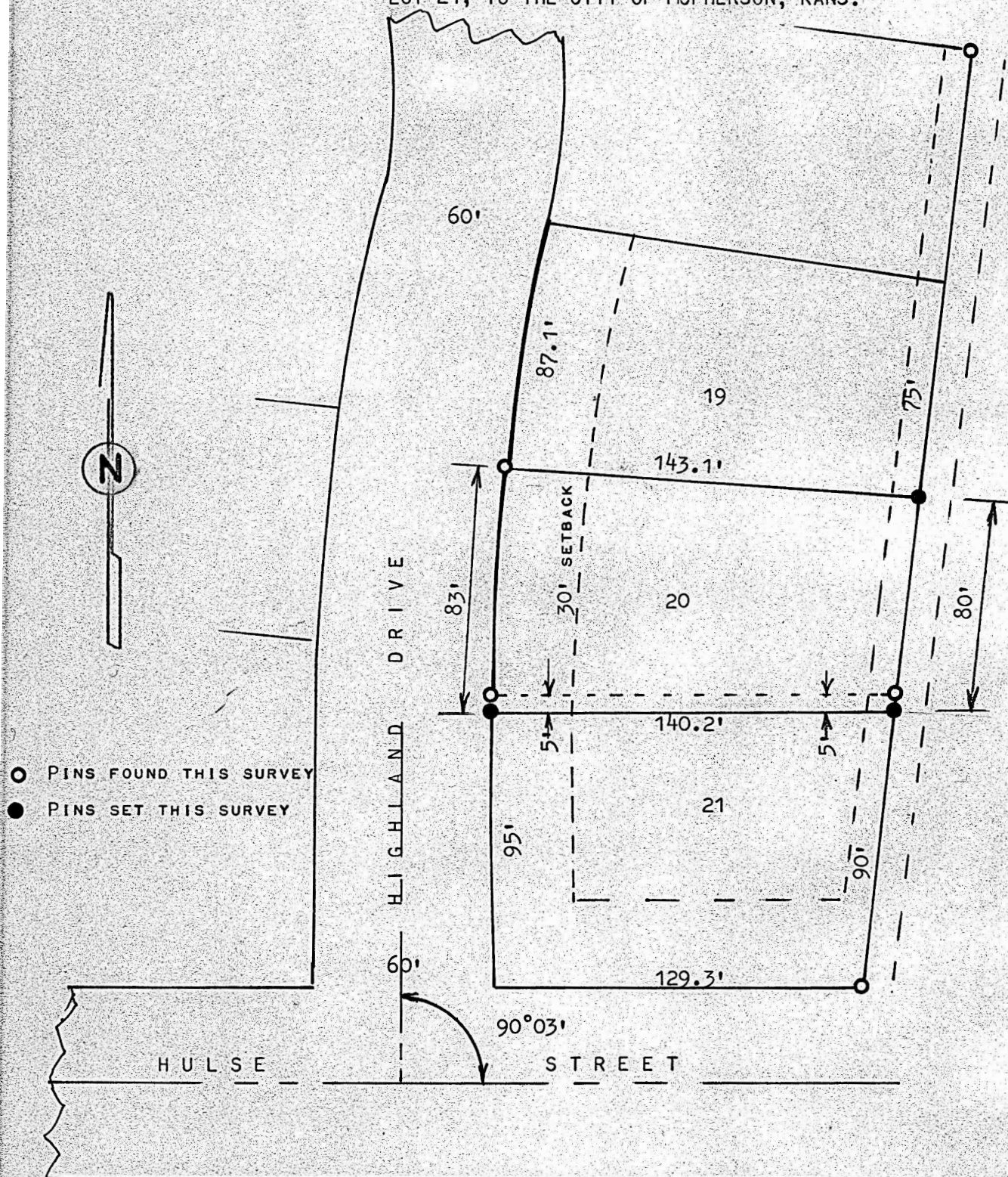


A SURVEY IN NORTH HIGH ADDITION
BLOCK 4, LOT 20, AND THE NORTH 5'
LOT 21, TO THE CITY OF MCPHERSON, KANS.



STATE OF KANSAS)
COUNTY OF MCPHERSON) SS

I, FRANCIS RANKIN, PROFESSIONAL ENGINEER OF THE STATE OF KANSAS DO HEREBY CERTIFY THAT UNDER MY SUPERVISION A SURVEY WAS MADE OF LOT 20, AND THE NORTH 5.0 FEET OF LOT 21, BLOCK 4, NORTH HIGH ADDITION, TO THE CITY OF MCPHERSON, KANSAS, AND THAT THE ABOVE PLAT IS A TRUE AND CORRECT PLAT SO FAR AS IT IS KNOWN TO ME.

SURVEY CALLED FOR BY HARRIS DEVELOPEMENT Co.

SIGNED THIS 20 DAY OF FEBRUARY, 1973

FRANCIS RANKIN
PROFESSIONAL ENGINEER
MCPHERSON, KANSAS



MICROFILM