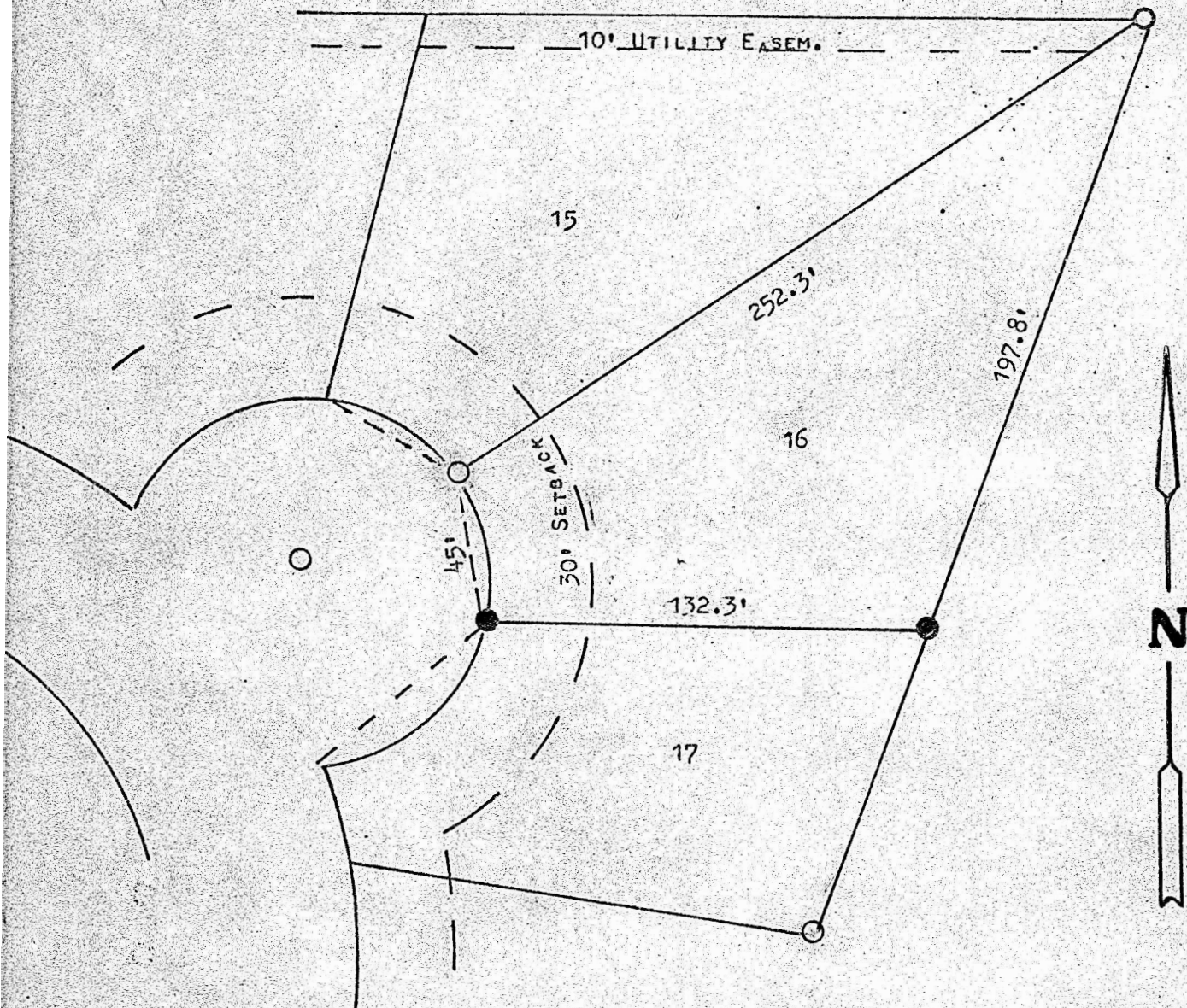


A SURVEY OF LOT 16, BLOCK 4, NORTH HIGH ADDITION
MCPHERSON, KANSAS



○ PINS FOUND THIS SURVEY

● PINS SET THIS SURVEY

STATE OF KANSAS)
COUNTY OF MCPHERSON) SS

I, MELVIN FERGUSON, PROFESSIONAL ENGINEER OF THE STATE OF KANSAS DO HEREBY CERTIFY THAT UNDER MY SUPERVISION A SURVEY WAS MADE OF LOT 16, BLOCK 4, NORTH HIGH ADDITION, TO THE CITY OF MCPHERSON, KANSAS, AND THAT THE ABOVE PLAT IS A TRUE AND CORRECT PLAT SO FAR AS IT IS KNOWN TO ME.

SURVEY CALLED FOR BY RODNEY WILLIAMS

SIGNED THIS 8th DAY OF APRIL, 1974

Melvin Ferguson
MELVIN FERGUSON
PROFESSIONAL ENGINEER
MCPHERSON, KANSAS

