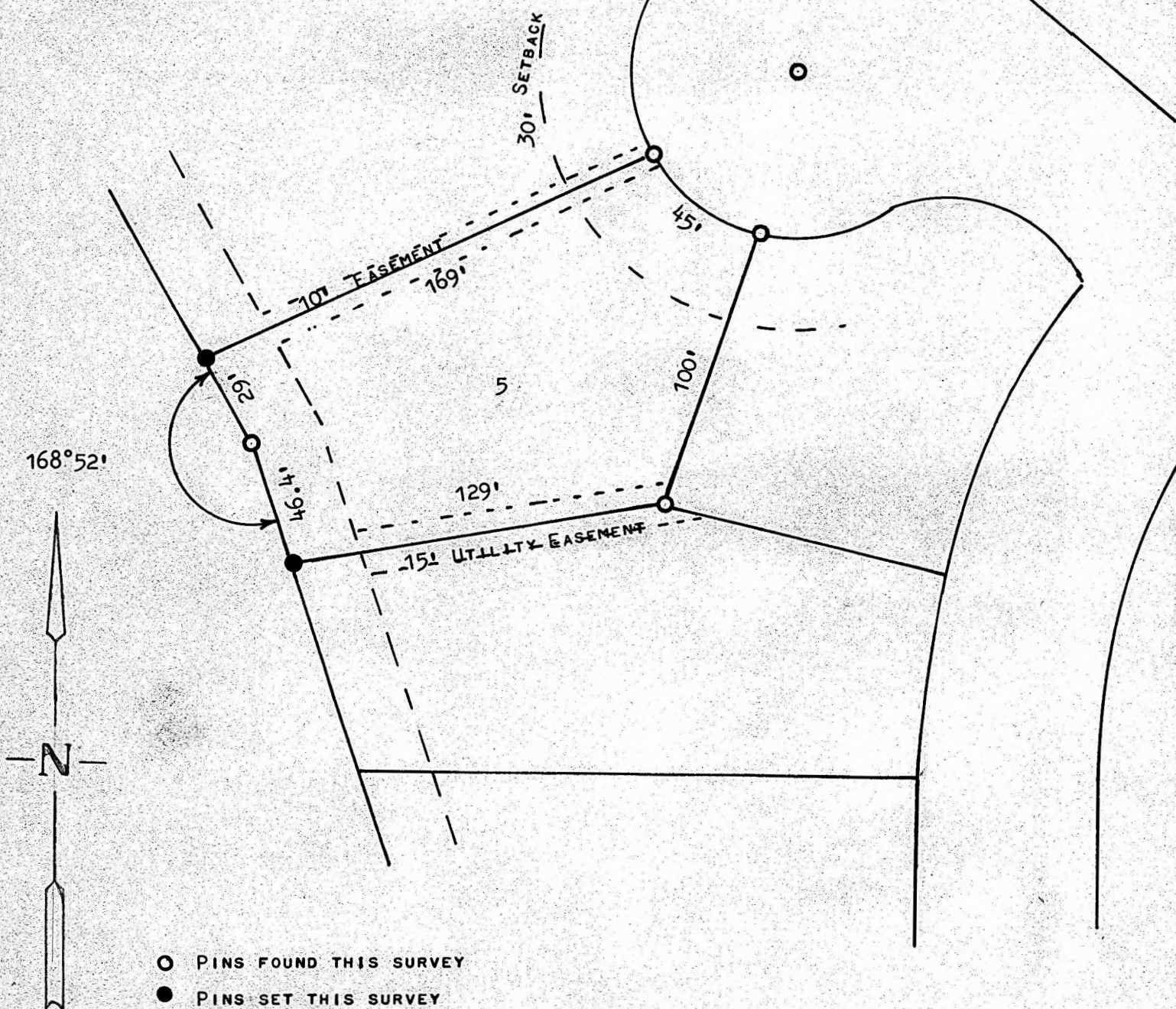


A SURVEY OF LOT 5, BLOCK 4
NORTH HIGH ADDITION
MCIPHERSON, KANSAS



STATE OF KANSAS)
COUNTY OF MCPHERSON) SS

I, FRANCIS RANKIN, PROFESSIONAL ENGINEER OF THE STATE OF KANSAS
DO HEREBY CERTIFY THAT UNDER MY SUPERVISION A SURVEY WAS MADE OF
LOT 5, BLOCK 4, NORTH HIGH ADDITION, TO THE CITY OF MCPHERSON, KANSAS
AND THAT THE ABOVE PLAT IS A TRUE AND CORRECT PLAT SO FAR AS IT IS
KNOWN TO ME.

SURVEY CALLED FOR BY RON TEETERS

SIGNED THIS 8 DAY OF AUGUST, 1973

Francis Rankin
FRANCIS RANKIN
PROFESSIONAL ENGINEER
MCPHERSON, KANSAS

